

FROM THE FOUNDER OF THE #VIKISEWS BRAND



Back in 2016, when I was working on my first set of sewing instructions, I was trying to write them in such a way that even a complete beginner could easily understand and use them to create their very first garment. These instructions laid the foundation for the Vikisews brand, its vision and its mission. I wanted to create modern patterns with the utmost detailed and clear instructions.

Now, with each new collection we are constantly improving our instructions, amending them and adding more relevant details. By the time the final product reaches you, our drafters, correctors, and editors would have spent weeks perfecting every word and every photograph. If you compile a few of our instructions together, you will get a sewing manual that will assist you in sewing all kinds of garments at any difficulty level.

And I would be very happy if these instructions helped you to turn your hobby into a lifelong passion... Enjoy the process! Create your ultimate dream wardrobe! Wear your garments proudly for years to come!

If you have any questions, please contact us at info@vikisews.com — we are always there to help.



AMARANTA PATTERN DESCRIPTION

Amaranta is a loose-fitting cape coat with a straight silhouette and a stand collar. The front features welt pockets and a button and buttonhole closure at the center. At the back, the collar seam has a button tab for the detachable cape. The cape closes with a button tab and button at the center front. Both the coat and the cape are fully lined and feature decorative topstitching. Amaranta is above-knee length.



IMPORTANT!

The contents of this pattern are copyright protected and belong exclusively to Vikisews. You may use Vikisews patterns for personal use. It is prohibited to share Vikisews patterns and instructions with third parties, as well as to publish patterns and instructions online for public access. **Non-compliance with the mentioned rules is a violation of the US copyright law and may result in civil liability and criminal prosecution.**

You may use Vikisews patterns for commercial use, to sew custom-made garments and/or create fashion collections, on the condition that the patterns are solely used in a manufacturing setting and are not further shared with individuals.

GARMENT LENGTH, SLEEVE LENGTH

Height, cm	Garment length, cm	Sleeve length including shoulder width, cm
1 (154–160)	91.9–94.3	64.7–66.7
2 (162–168)	95.9–98.3	67.4–69.2
3 (170–176)	99.9–102.3	70.8–72.4
4 (178–184)	103.9–106.3	74–75.5

Height, ft	Garment length, in	Sleeve length including shoulder width, in
1 (5'1"–5'3")	36 1/8–37 1/8	25 1/2–26 1/4
2 (5'4"–5'6")	37 3/4–38 3/4	26 1/2–27 1/4
3 (5'7"–5'9")	39 3/8–40 1/4	27 7/8–28 1/2
4 (5'10"–6'1")	40 7/8–41 7/8	29 1/8–29 3/4

SUGGESTED FABRIC

To sew this cape coat, choose medium-weight, soft, non-stretch, and opaque outerwear fabrics made of natural fibers, artificial fibers, blends, or synthetics.

The following fabrics are recommended: gabardine, denim, outerwear fabrics, faux leather.

For the lining, we recommend lining fabrics made of artificial fibers (viscose), blends (viscose + elastane, viscose + polyester), or synthetics (polyester, polyester + elastane).

The cape coat in the photo is made of outerwear gabardine. The fabric is medium weight, soft, and non-stretch. The fiber content is 70% cotton and 30% polyester. The fabric weight is 260 g/m².

The fiber content of the lining is 100% viscose. The fabric weight is 95 g/m².

FABRIC AND NOTIONS REQUIREMENTS

1. Main fabric, 140 cm wide, 220–280 g/m², with a directional print/nap, in meters:

Height, cm	Size		
	XS-S	M-L	XL
1 (154–160)	3.15	3.15	3.2
2 (162–168)	3.35	3.4	3.45
3 (170–176)	3.55	3.7	3.75
4 (178–184)	4	4.05	4.1

Main fabric, 55" wide, 220–280 g/m², with a directional print/nap, in yards:

Height, ft	Size		
	XS-S	M-L	XL
1 (5'1"–5'3")	3 1/2	3 1/2	3 1/2
2 (5'4"–5'6")	3 5/8	3 3/4	3 3/4
3 (5'7"–5'9")	3 7/8	4	4 1/8
4 (5'10"–6'1")	4 3/8	4 3/8	4 1/2

2. Lining fabric, 140 cm wide, 90–120 g/m², in meters:

Height, cm	Size		
	XS-S	M-L	XL
1 (154–160)	2.7	2.7	2.75
2 (162–168)	2.9	2.95	2.95
3 (170–176)	3.05	3.05	3.1
4 (178–184)	3.25	3.3	3.3

Lining fabric, 55" wide, 90–120 g/m², in yards:

Height, ft	Size		
	XS-S	M-L	XL
1 (5'1"–5'3")	3	3	3
2 (5'4"–5'6")	3 1/8	3 1/4	3 1/4
3 (5'7"–5'9")	3 3/8	3 3/8	3 3/8
4 (5'10"–6'1")	3 1/2	3 5/8	3 5/8

IMPORTANT! When purchasing fabric, please account for shrinkage and buy 5% more than required.

3. Lightweight interfacing, knit or woven, 140 cm wide, 40 g/m², in meters:

Height, cm	Size	
	XS-S	M-XL
1 (154–160)	1	1
2 (162–168)	1.05	1.05
3 (170–176)	1.1	1.1
4 (178–184)	1.1	1.15

Lightweight interfacing, knit or woven, 55" wide, 40 g/m², in yards:

Height, ft	Size	
	XS-S	M-XL
1 (5'1"–5'3")	1 1/8	1 1/8
2 (5'4"–5'6")	1 1/8	1 1/8
3 (5'7"–5'9")	1 1/4	1 1/4
4 (5'10"–6'1")	1 1/4	1 1/4

4. Stitched bias-cut fusible stay tape with stitch reinforcement, 1.5 cm (5/8") wide — 4.92–5.36 m (5 3/8–5 7/8 yd)
5. Two buttons, 2.2 cm (7/8") in diameter
6. Six buttons, 2.5 cm (1") in diameter
7. Matching thread — 1 spool for the sewing machine
8. Matching topstitching thread (e.g., Madeira No. 35) — 2 spools

TOOLS AND EQUIPMENT

- sewing machine for construction
- buttonhole foot for the sewing machine

PATTERN PIECES LIST

1. From main fabric:

- front — cut 2
- back — cut 2
- upper collar — cut 1
- undercollar — cut 1
- coat back neck facing — cut 1
- coat front facing — cut 2
- welt — cut 2
- pocket facing— cut 2
- tab — cut 4
- cape — cut 2
- cape back neck facing — cut 1
- cape front facing — cut 2

2. From lining fabric:

- front lining — cut 2
- back lining — cut 2
- pocket top lining— cut 2
- pocket bottom lining— cut 2
- cape front lining — cut 2
- cape back lining — cut 1 on fold

IMPORTANT! Don't forget to transfer all pattern markings and notches onto the fabric.

3. From interfacing:

- upper collar — cut 1
- undercollar — cut 1
- coat back neck facing — cut 1
- coat front facing — cut 2
- welt — cut 2
- pocket facing— cut 2
- tab — cut 2
- cape back neck facing — cut 1
- cape front facing — cut 2

Partially interface the following:

- two strips (length according to the pattern) to interface the pocket opening. The interfacing strips should be cut on the straight grain (parallel to the selvedge)
- strips (size according to the pattern) to interface the hem allowances on the front and back pieces

SEAM ALLOWANCES

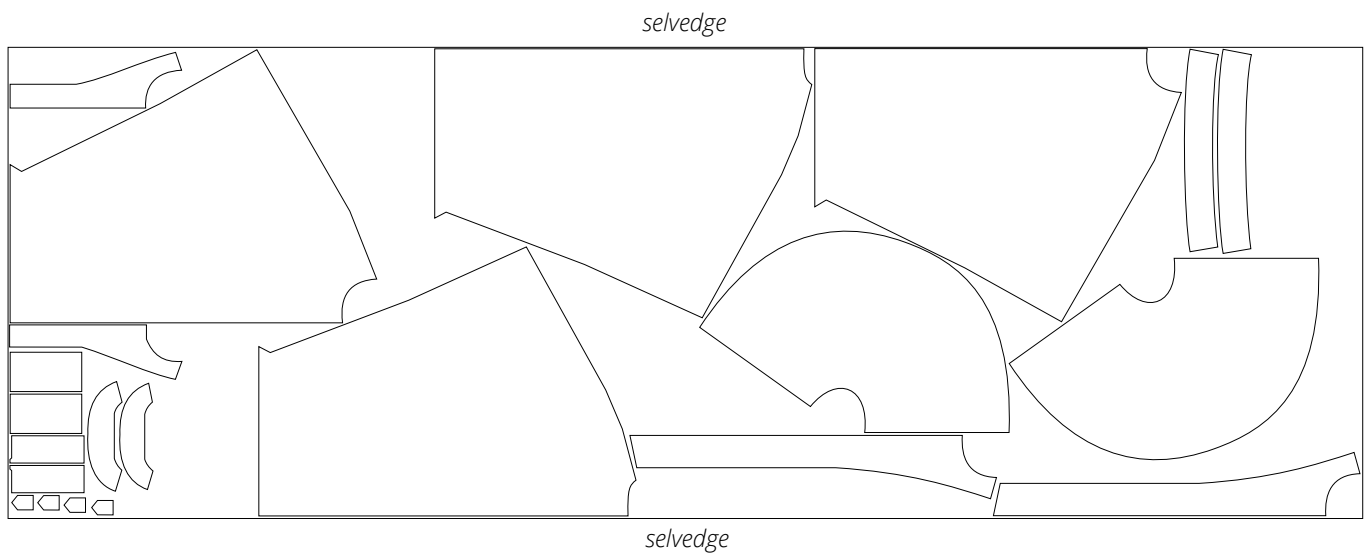
All pattern pieces include seam allowances as follows:

- garment hem allowance — 4 cm (1 5/8")
- pocket lining edges— 1.5 cm (5/8")
- all other edges — 1 cm (3/8")

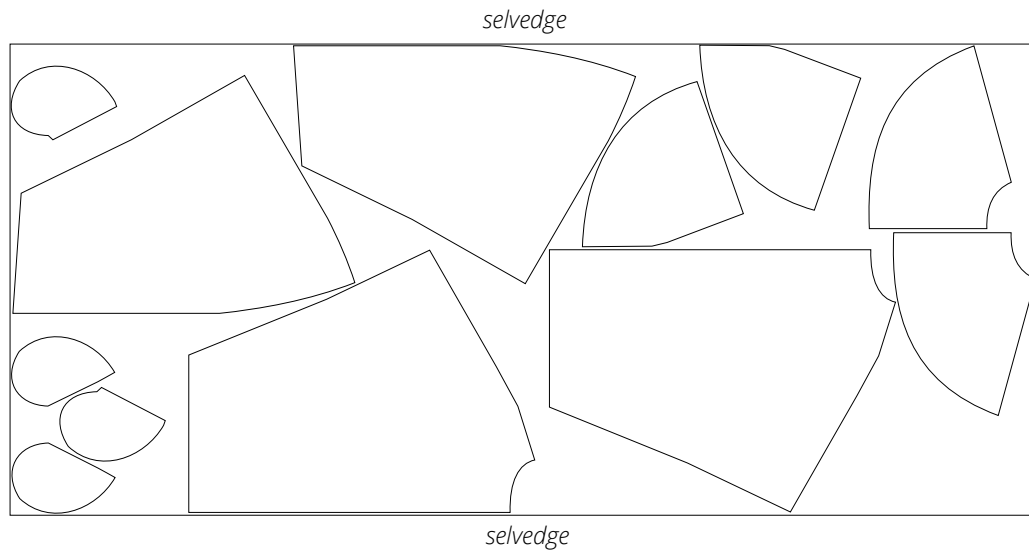
Take this into account when laying out the pattern pieces on the fabric.

CUTTING LAYOUT

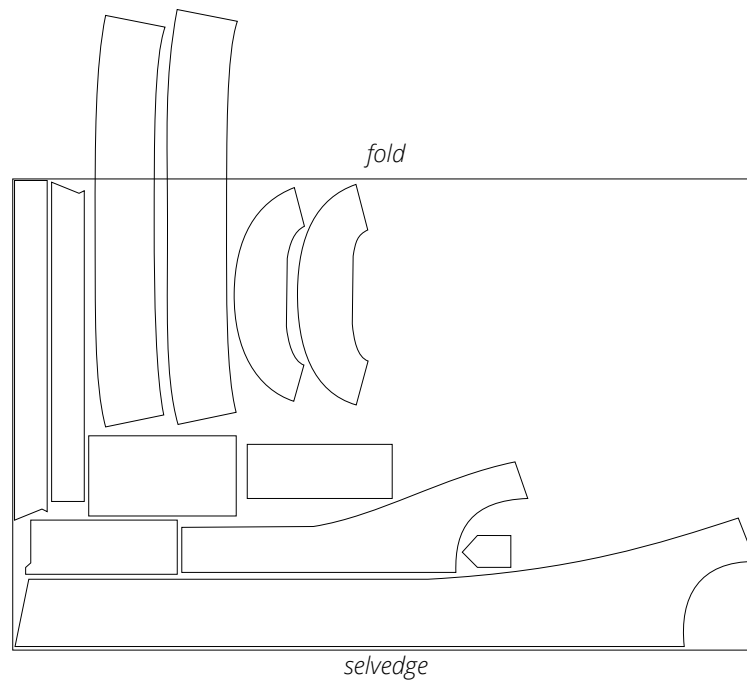
Main fabric, 140 cm (55") wide, with a directional print/nap, cut on a single layer,
for all sizes in all heights



Lining fabric, 140 cm (55") wide, with a directional print, cut on a single layer,
for all sizes in all heights



Interfacing, 140 cm (55") wide, cut on fold,
for all sizes in all heights



Attention! The upper collar and undercollar pieces are cut on a single layer out of the leftover fabric.
Cut the coat back neck facing and cape back neck facing pieces one each.

READY? LET'S GET SEWING!



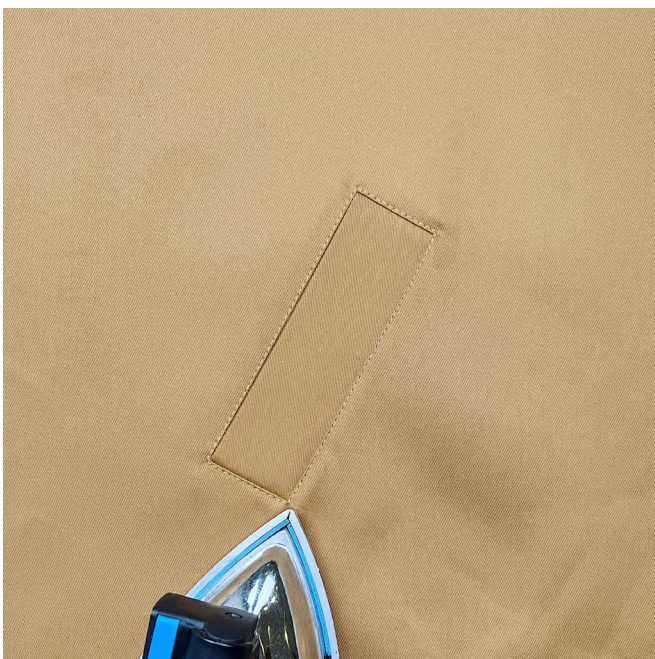
Place the pocket lining pieces right sides together, align the edges, match the notches, and pin.

Machine-stitch the pocket lining with two seams, one stitching line on top of the other. Backstitch at the beginning and end of the seam.

Press the seams.



Working on the right side, topstitch at 1–2 mm from the pocket facing seam and pocket side edges. Pass the topstitching thread tails to the wrong side and tie them into knots.



Press the finished pocket.