

FROM THE FOUNDER OF THE #VIKISEWS BRAND



Back in 2016, when I was working on my first set of sewing instructions, I was trying to write them in such a way that even a complete beginner could easily understand and use them to create their very first garment. These instructions laid the foundation for the Vikisews brand, its vision and its mission. I wanted to create modern patterns with the utmost detailed and clear instructions.

Now, with each new collection we are constantly improving our instructions, amending them and adding more relevant details. By the time the final product reaches you, our drafters, correctors, and editors would have spent weeks perfecting every word and every photograph. If you compile a few of our instructions together, you will get a sewing manual that will assist you in sewing all kinds of garments at any difficulty level.

And I would be very happy if these instructions helped you to turn your hobby into a lifelong passion... Enjoy the process! Create your ultimate dream wardrobe! Wear your garments proudly for years to come!

If you have any questions, please contact us at info@vikisews.com — we are always there to help.



HOLLAND PATTERN DESCRIPTION

Holland is a loose-fitting, lined pea coat with a straight silhouette. The front features welt pockets in the darts, while the back has a center seam. The dropped shoulder line is supported with shoulder pads and features epaulets secured with buttons and buttonholes. The loose-fitting two-piece sleeves have tabs secured with buttons and buttonholes in the front seams. The coat has a turned-down collar with a collar stand. The center front edges, welts, sleeve tabs, and epaulets feature decorative topstitching. Holland has a double-breasted button and buttonhole closure and is above-hip length.



IMPORTANT!

The contents of this pattern are copyright protected and belong exclusively to Vikisews. You may use Vikisews patterns for personal use. It is prohibited to share Vikisews patterns and instructions with third parties, as well as to publish patterns and instructions online for public access. **Non-compliance with the mentioned rules is a violation of the US copyright law and may result in civil liability and criminal prosecution.**

You may use Vikisews patterns for commercial use, to sew custom-made garments and/or create fashion collections, on the condition that the patterns are solely used in a manufacturing setting and are not further shared with individuals.

TOTAL EASE ALLOWANCE

	Bust ease	Waistline ease	Upper arm ease
cm	31.5–27.1	50.8–46.8	13.4–10.3
inches	12 $\frac{3}{8}$ –10 $\frac{5}{8}$	20–18 $\frac{3}{8}$	5 $\frac{1}{4}$ –4

GARMENT LENGTH, SLEEVE LENGTH

Height, cm	Back length, cm	Sleeve length including shoulder width, cm
1 (154–160)	57.2–61.7	73.1–75.3
2 (162–168)	59.2–63.7	75.1–77.4
3 (170–176)	61.2–65.7	77.1–79.3
4 (178–184)	63.2–67.7	79.1–81.3

Height, ft	Back length, in	Sleeve length including shoulder width, in
1 (5'1"–5'3")	22 $\frac{1}{2}$ –24 $\frac{1}{4}$	28 $\frac{3}{4}$ –29 $\frac{5}{8}$
2 (5'4"–5'6")	23 $\frac{1}{4}$ –25 $\frac{1}{8}$	29 $\frac{5}{8}$ –30 $\frac{1}{2}$
3 (5'7"–5'9")	24 $\frac{1}{8}$ –25 $\frac{7}{8}$	30 $\frac{3}{8}$ –31 $\frac{1}{4}$
4 (5'10"–6'1")	24 $\frac{7}{8}$ –26 $\frac{5}{8}$	31 $\frac{1}{8}$ –32

SUGGESTED FABRIC

To sew this pea coat, choose medium-weight, soft, non-stretch, structured coating fabrics made of natural, artificial, blended, or synthetic fibers.

The following fabrics are recommended: wool, wool coating, cashmere, melton wool. Choose plain-colored or mélange fabrics, with a short or medium pile or without pile.

Attention! We do not recommend thin or loosely woven fabrics.

For the lining, choose lining fabrics made of artificial fibers, blends, or synthetics.

The pea coat in the photo is made of wool coating. The fabric is medium weight, soft, and low-stretch. It has a medium pile. The fiber content is 100% wool. The fabric weight is 470 g/m². The lining is made of 45% viscose and 55% polyester. The fabric weight is 100 g/m².

FABRIC AND NOTIONS REQUIREMENTS

1. Main fabric, 140 cm wide, with a directional print/nap, in meters:

Height, cm	Size									
	34	36	38	40	42	44	46	48	50	52
1 (154–160)	1.8	1.85	1.9	2.1	2.1	2.15	2.15	2.25	2.3	2.3
2 (162–168)	1.85	1.9	1.95	2.15	2.2	2.2	2.25	2.35	2.35	2.4
3 (170–176)	1.95	1.95	2	2.2	2.25	2.25	2.3	2.4	2.4	2.45
4 (178–184)	2	2.05	2.1	2.3	2.3	2.3	2.35	2.45	2.45	2.5

Main fabric, 55" wide, with a directional print/nap, in yards:

Height, ft	Size									
	34	36	38	40	42	44	46	48	50	52
1 (5'1"–5'3")	2	2	2 ⅛	2 ¼	2 ¼	2 ¾	2 ¾	2 ½	2 ½	2 ½
2 (5'4"–5'6")	2	2 ⅛	2 ⅛	2 ¾	2 ¾	2 ¾	2 ½	2 ⅝	2 ⅝	2 ⅝
3 (5'7"–5'9")	2 ⅛	2 ⅛	2 ⅛	2 ¾	2 ½	2 ½	2 ½	2 ⅝	2 ⅝	2 ⅝
4 (5'10"–6'1")	2 ⅛	2 ¼	2 ¼	2 ½	2 ½	2 ½	2 ⅝	2 ⅝	2 ⅝	2 ¾

2. Lining fabric, 140 cm wide, with a directional print, in meters:

Height, cm	Size			
	34-40	42-48	50	52
1 (154-160)	1.2	1.25	1.3	1.5
2 (162-168)	1.25	1.3	1.35	1.55
3 (170-176)	1.3	1.35	1.35	1.6
4 (178-184)	1.35	1.4	1.45	1.7

Lining fabric, 55" wide, with a directional print, in yards:

Height, ft	Size			
	34-40	42-48	50	52
1 (5'1"-5'3")	1 ¼	1 ⅜	1 ¾	1 ⅝
2 (5'4"-5'6")	1 ⅜	1 ⅜	1 ½	1 ¾
3 (5'7"-5'9")	1 ⅜	1 ½	1 ½	1 ¾
4 (5'10"-6'1")	1 ½	1 ½	1 ⅝	1 ⅞

IMPORTANT! When purchasing fabric, please account for shrinkage and buy 5% more than required.

3. Lightweight interfacing, knit or woven, 140 cm (55") wide, 30-40 g/m², for all sizes and heights — 1 m (1 1/8 yd)
4. Stitched bias-cut fusible stay tape with stitch reinforcement, 1.5 cm (5/8") wide — 2.75 m (3 yd)
5. Nine buttons, 2.3-2.7 cm (7/8-1 1/8") in diameter
6. One pair of shoulder pads, 1.5 cm (5/8") tall
7. Matching thread — 2 spools

TOOLS AND EQUIPMENT

- sewing machine for construction
- buttonhole foot for the sewing machine
- stitch-in-the-ditch foot for the sewing machine (optional)

PATTERN PIECES LIST

1. From main fabric:

- Front — cut 2
- Back — cut 2
- Top sleeve — cut 2
- Bottom sleeve — cut 2
- Undercollar — cut 1 on fold
- Upper collar — cut 1 on fold
- Collar stand — cut 2
- Pocket facing — cut 2
- Pocket welt — cut 2
- Sleeve tab — cut 4
- Epaulet — cut 4
- Front facing — cut 2
- Back neck facing — cut 1

2. From lining fabric:

- Front lining — cut 2
- Back lining — cut 1 on fold
- Top sleeve lining — cut 2
- Bottom sleeve lining — cut 2
- Pocket top lining — cut 2
- Pocket bottom lining — cut 2

IMPORTANT! Don't forget to transfer all pattern markings and notches onto the fabric.

3. From interfacing:

- Undercollar — cut 1 on fold
- Upper collar — cut 1 on fold
- Collar stand — cut 2
- Pocket facing — cut 2
- Pocket welt — cut 2 (1/2 of the width)
- Sleeve tab — cut 2
- Epaulet — cut 2
- Front facing — cut 2
- Back neck facing — cut 1

Additionally, cut the following from interfacing:

- four strips (width and length according to the pattern) to interface the hem area on the front and back pieces
- two strips (width and length according to the pattern) to interface the pocket opening area on the front pieces
- four strips (width and length according to the pattern) to interface the hem area on the sleeve pieces

The interfacing strips should be cut on the straight grain (parallel to the selvedge).

SEAM ALLOWANCES

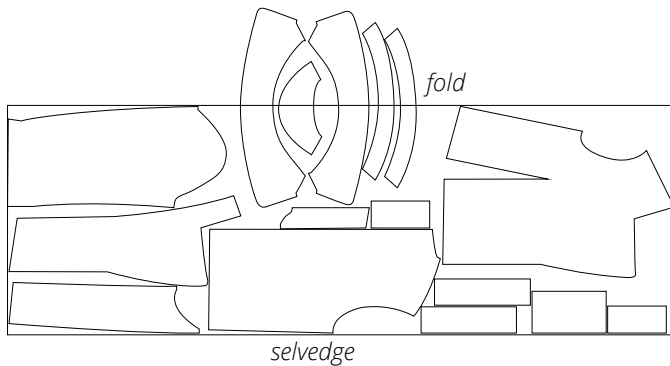
All pattern pieces include seam allowances as follows:

- garment hem allowance — 4 cm (1 5/8")
- sleeve hem allowance — 4 cm (1 5/8")
- pocket lining curved edges — 1.5 cm (5/8")
- all other edges — 1 cm (3/8")

Take this into account when laying out the pattern pieces on the fabric.

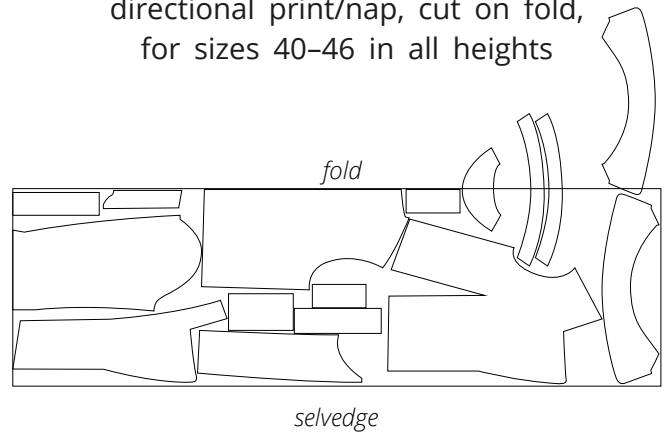
CUTTING LAYOUT

Main fabric, 140 cm (55") wide, with a directional print/nap, cut on fold, for sizes 34–38 in all heights



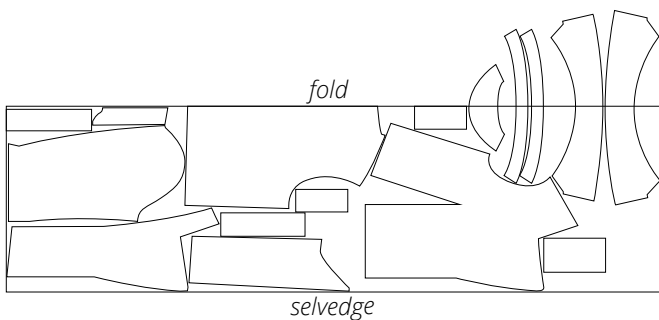
Important! Cut the upper collar, undercollar, back neck facing, and collar stand pieces on a single layer from the leftover fabric.

Main fabric, 140 cm (55") wide, with a directional print/nap, cut on fold, for sizes 40–46 in all heights



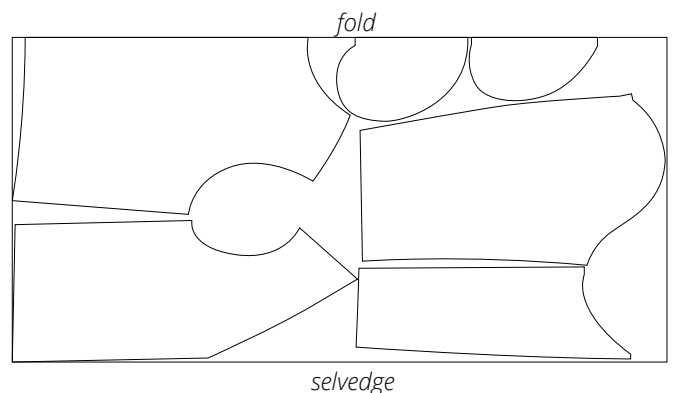
Important! Cut the undercollar, back neck facing, and collar stand pieces on a single layer from the leftover fabric. Cut only one undercollar and one upper collar.

Main fabric, 140 cm (55") wide, with a directional print/nap, cut on fold, for sizes 48–52 in all heights

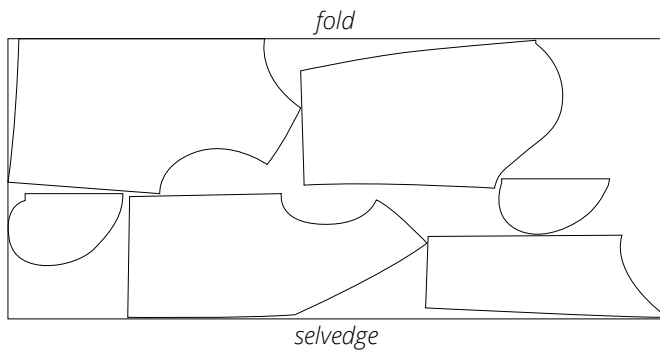


Important! Cut the upper collar, undercollar, back neck facing, and collar stand pieces on a single layer from the leftover fabric.

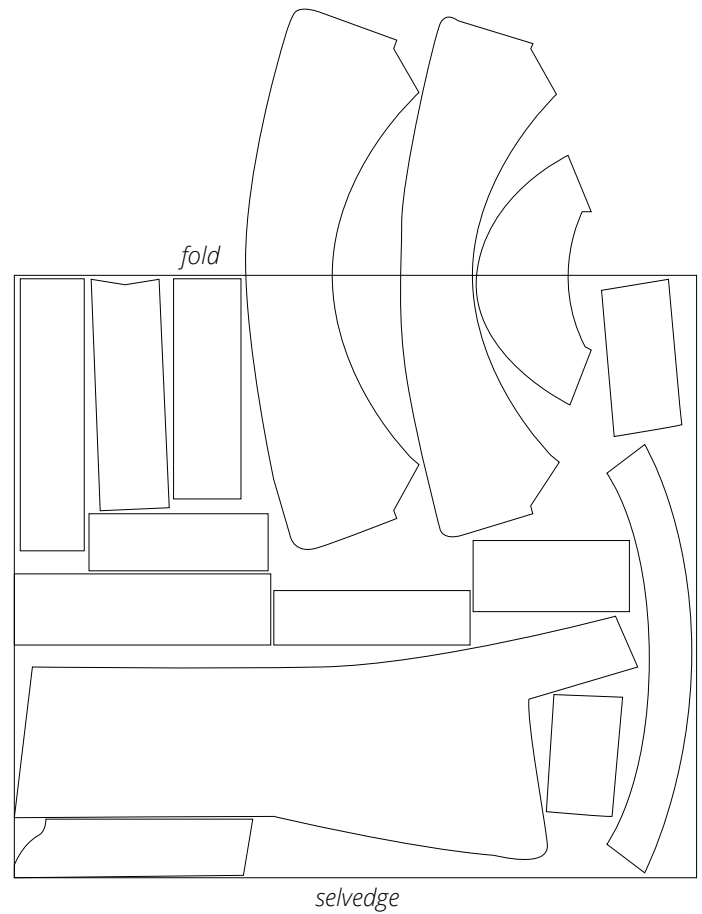
Lining fabric, 140 cm (55") wide, with a directional print, cut on fold, for sizes 34–50 in all heights



Lining fabric, 140 cm (55") wide,
with a directional print, cut on fold,
for size 52 in all heights



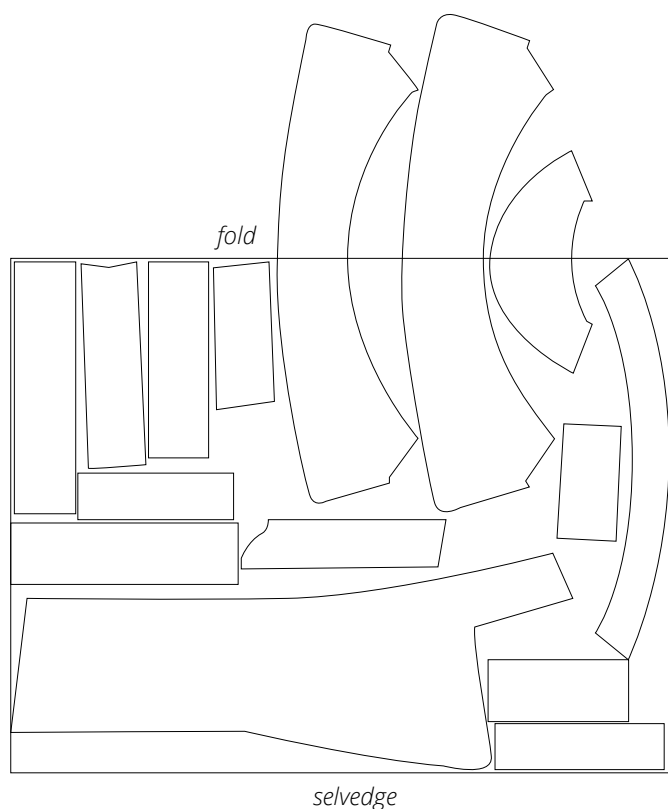
Interfacing, 140 cm (55") wide, cut on fold,
for sizes 34–38 in all heights



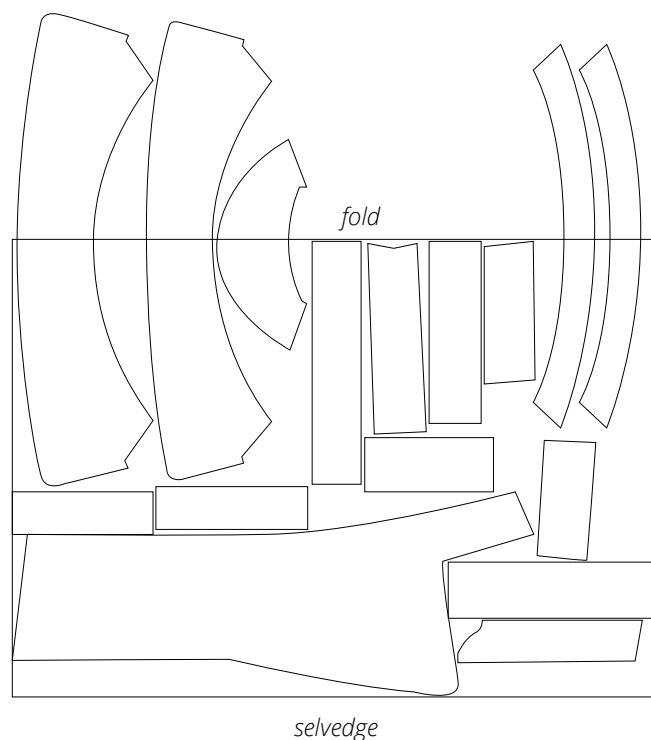
Important! Cut the upper collar, undercollar,
and back neck facing pieces on a single layer
from the leftover fabric.

Interfacing, 140 cm (55") wide, cut on fold,
for sizes 40–46 in all heights

Interfacing, 140 cm (55") wide, cut on fold,
for sizes 48–52 in all heights

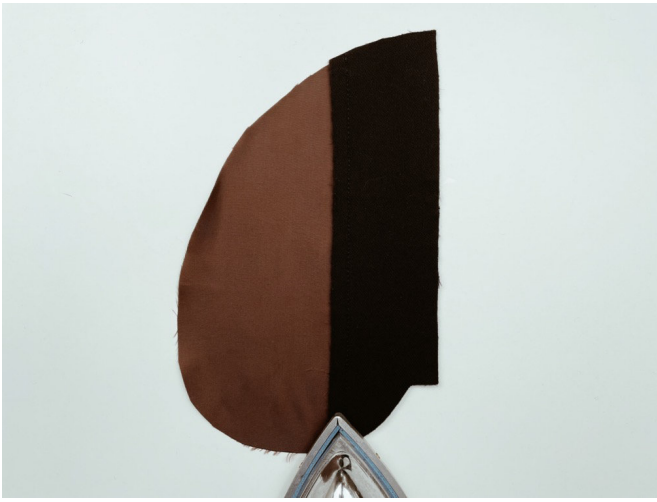


Important! Cut the upper collar, undercollar,
and back neck facing pieces on a single layer
from the leftover fabric.



Important! Cut the upper collar, undercollar,
back neck facing, and collar stand pieces on a
single layer from the leftover fabric.

READY? LET'S GET SEWING!



Press the seam allowances towards the pocket lining piece.



Place the underside of the welt right sides together with the pocket bottom lining, align the edges. Fold the welt's outer side out of the way and pin the welt to the lining, matching the notches.



Machine-stitch, backstitching at the beginning and end of the seam. Press the seam flat.



With the outer side of the welt facing down, place the welt onto the right side of the front piece. Align the welt edge with the pocket opening line and pin.