

FROM THE FOUNDER OF THE #VIKISEWS BRAND



Back in 2016, when I was working on my first set of sewing instructions, I was trying to write them in such a way that even a complete beginner could easily understand and use them to create their very first garment. These instructions laid the foundation for the Vikisews brand, its vision and its mission. I wanted to create modern patterns with the utmost detailed and clear instructions.

Now, with each new collection we are constantly improving our instructions, amending them and adding more relevant details. By the time the final product reaches you, our drafters, correctors, and editors would have spent weeks perfecting every word and every photograph. If you compile a few of our instructions together, you will get a sewing manual that will assist you in sewing all kinds of garments at any difficulty level.

And I would be very happy if these instructions helped you to turn your hobby into a lifelong passion... Enjoy the process! Create your ultimate dream wardrobe! Wear your garments proudly for years to come!

If you have any questions, please contact us at info@vikisews.com — we are always there to help.



YGRITTE PATTERN DESCRIPTION

Ygritte is a close-fitting dress with an accentuated waist. The bust darts have been transferred into the princess seams. The back features princess seams and an open back design. The pleated side panels add extra volume to the skirt. The dress has a turn-down, notched collar and a center front button and buttonhole fastening. Ygritte is above-knee length.



IMPORTANT!

The contents of this pattern are copyright protected and belong exclusively to Vikisews. You may use Vikisews patterns for personal use. It is prohibited to share Vikisews patterns and instructions with third parties, as well as to publish patterns and instructions online for public access. **Non-compliance with the mentioned rules is a violation of the US copyright law and may result in civil liability and criminal prosecution.**

You may use Vikisews patterns for commercial use, to sew custom-made garments and/or create fashion collections, on the condition that the patterns are solely used in a manufacturing setting and are not further shared with individuals.

TOTAL EASE ALLOWANCE

	Bust ease (estimated)	Waistline ease	Hipline ease (estimated)
cm	-5.7 – (-3.2)	3.2–9.4	114.3–169.9
inches	-2 1/4 – (-1 1/4)	1 1/4–3 3/4	45–66 7/8

GARMENT LENGTH

Height, cm	Back length from waist down, cm	Height, ft	Back length from waist down, in
1 (154–160)	37.5–40.2	1 (5'1"–5'3")	14 3/4–15 7/8
2 (162–168)	40.5–43.2	2 (5'4"–5'6")	16–17
3 (170–176)	43.5–46.2	3 (5'7"–5'9")	17 1/8–18 1/4
4 (178–184)	46.5–49.2	4 (5'10"–6'1")	18 1/4–19 3/8

SUGGESTED FABRIC

To sew this dress, choose dress-weight fabrics with the following properties: medium weight, pliable, soft, non-stretch or low-stretch, opaque. The fiber content can include natural fibers, artificial fibers, blends, or synthetics.

Recommended fabrics: dress-weight viscose, nettle, linen, cotton.

Attention! We do not recommend stretchy knit fabrics and lightweight sheer fabrics (chiffon, organza, stretch lace).

The dress in the photo is made of linen. The fabric is medium weight, pliable, soft, with a little stretch. The fiber content is 100% linen. The fabric weight is 220 g/m².

FABRIC AND NOTIONS REQUIREMENTS

1. Main fabric, 140 cm wide, with a directional print/nap, in meters:

Height, cm	Size					
	34	36	38-40	42-44	46-48	50-52
1 (154-160)	1.45	1.5	1.55	1.65	1.7	1.95
2 (162-168)	1.5	1.55	1.6	1.7	1.8	1.95
3 (170-176)	1.65	1.65	1.7	1.75	1.85	2.05
4 (178-184)	1.65	1.70	1.75	1.85	1.95	2.2

Main fabric, 55" wide, with a directional print/nap, in yards:

Height, ft	Size					
	34	36	38-40	42-44	46-48	50-52
1 (5'1"-5'3")	1 5/8	1 5/8	1 3/4	1 3/4	1 7/8	2 1/8
2 (5'4"-5'6")	1 5/8	1 3/4	1 3/4	1 7/8	2	2 1/8
3 (5'7"-5'9")	1 3/4	1 3/4	1 7/8	1 7/8	2	2 1/4
4 (5'10"-6'1")	1 3/4	1 7/8	1 7/8	2	2 1/8	2 3/8

IMPORTANT! When purchasing fabric, please account for shrinkage and buy 5% more than required.

2. Lightweight interfacing, knit or woven, 140 cm (55") wide, for all sizes in all heights — 1 m (1 1/8 yd)
3. Stitched bias-cut fusible stay tape with stitch reinforcement, 1 cm (3/8") wide — 1.25 m (1 3/8 yd)
4. Five buttons, 1-1.2 cm (3/8-1/2") in diameter
5. Matching thread — 4 spools (1 spool for the sewing machine + 3 spools for the overlocker)

TOOLS AND EQUIPMENT

- sewing machine for construction
- overlocker for finishing raw edges. This may be replaced with a stretch overlock stitch or a zigzag stitch on the sewing machine (overlock or zigzag stitch width 2-3 mm, stitch length 2.5 mm)
- buttonhole foot for the sewing machine

PATTERN PIECES LIST

1. From main fabric:

- center front — cut 2
- side front — cut 2
- center back — cut 2
- side back — cut 2
- upper collar — cut 1 on fold
- undercollar — cut 1 on fold
- collar stand — cut 2
- top lapel — cut 2
- bottom lapel — cut 2
- front facing — cut 2
- front armscye facing — cut 2
- back facing — cut 2
- side skirt — cut 2

IMPORTANT! Don't forget to transfer all pattern markings and notches onto the fabric.

2. From interfacing:

- upper collar — cut 1 on fold
- undercollar — cut 1 on fold
- collar stand — cut 2
- top lapel — cut 2
- bottom lapel — cut 2
- front facing — cut 2
- front armscye facing — cut 2
- back facing — cut 2

SEAM ALLOWANCES

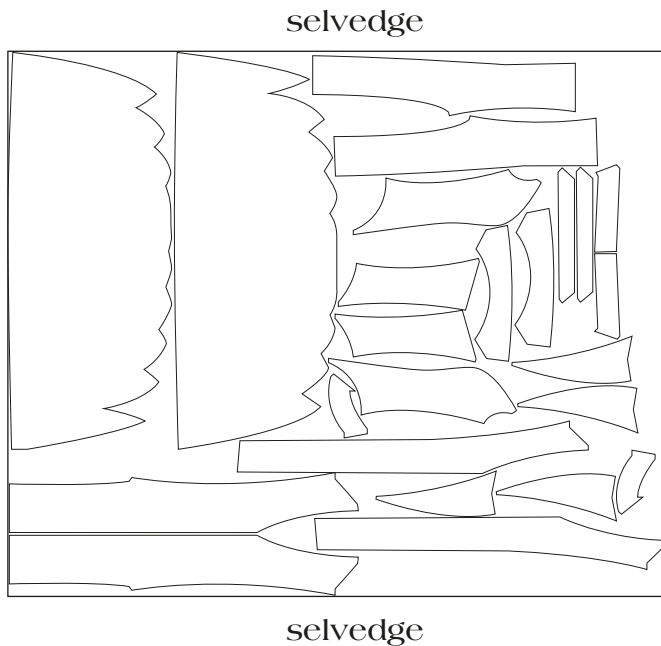
All pattern pieces include seam allowances as follows:

- garment hem allowance — 3.5 cm (1 3/8")
- all other edges — 1 cm (3/8").

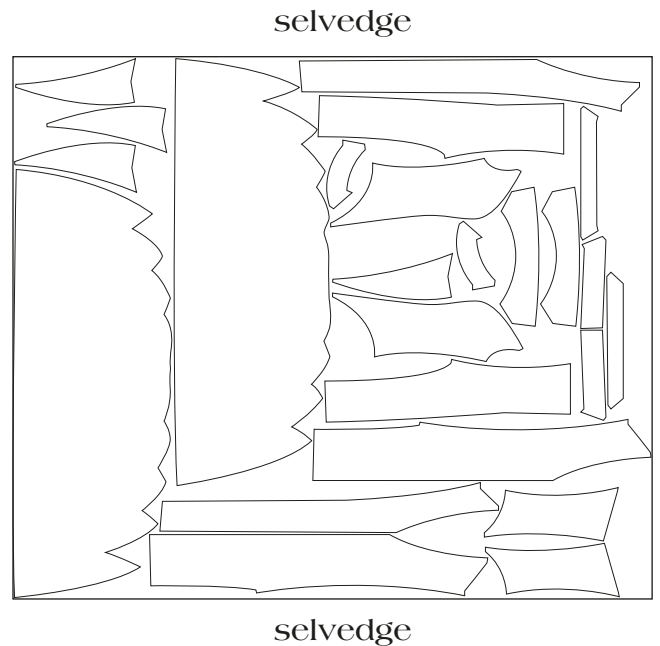
Take this into account when laying out pattern pieces on the fabric.

CUTTING LAYOUT

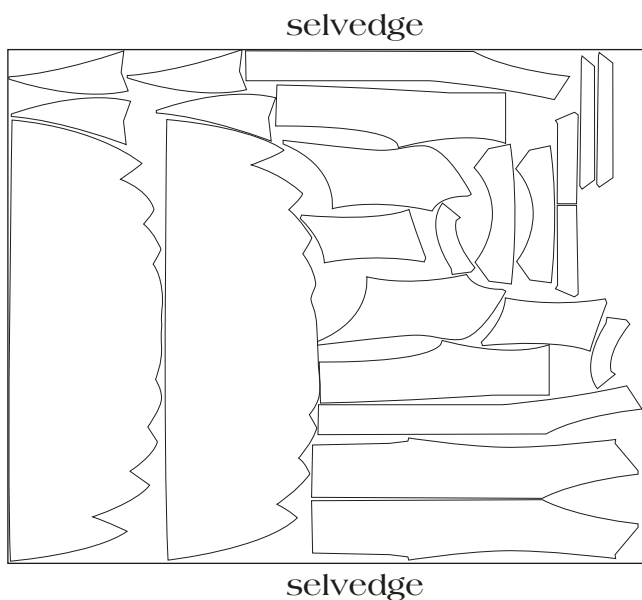
Main fabric, 140 cm (55") wide, with a directional print/nap, cut on a single layer, for sizes 34–36 in all heights



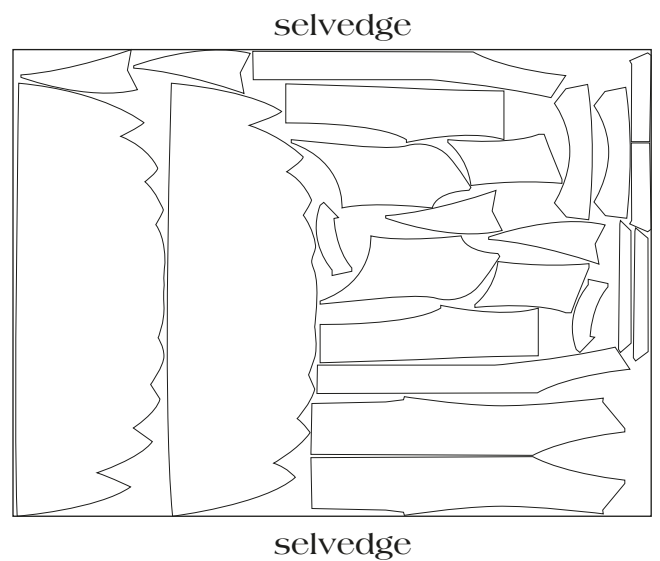
Main fabric, 140 cm (55") wide, with a directional print/nap, cut on a single layer, for sizes 38–40 in all heights



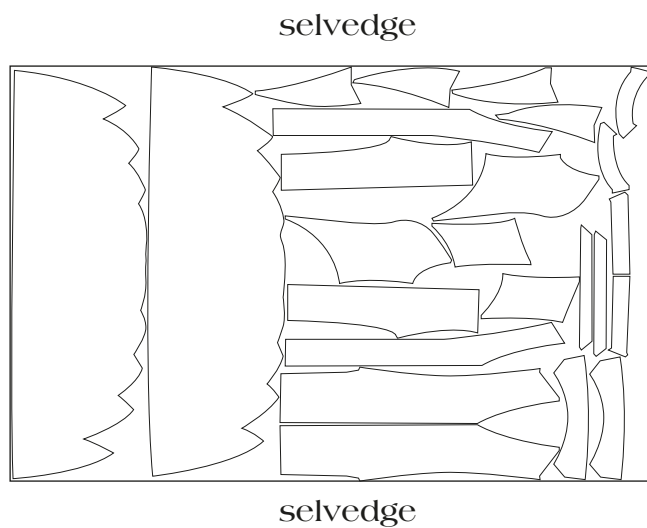
Main fabric, 140 cm (55") wide, with a directional print/nap, cut on a single layer, for sizes 42–44 in all heights



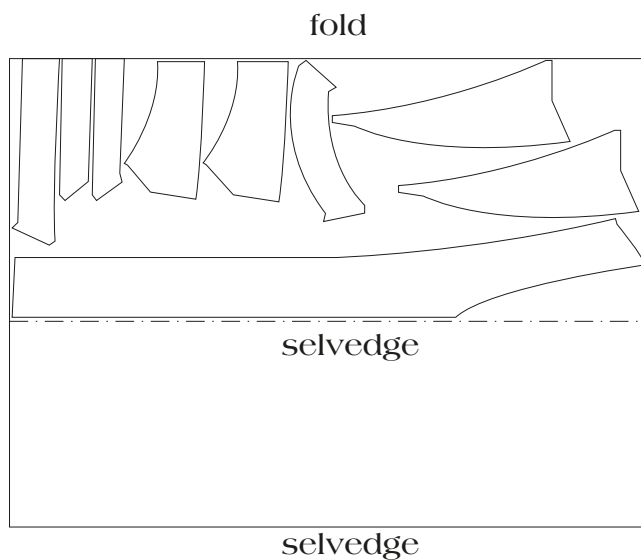
Main fabric, 140 cm (55") wide, with a directional print/nap, cut on a single layer, for sizes 46–48 in all heights



Main fabric, 140 cm (55") wide, with a directional print/nap, cut on a single layer, for sizes 50-52 in all heights



Interfacing, 140 cm (55") wide, cut on a partial fold and in one direction, for all sizes in all heights



READY? LET'S GET SEWING!



Overlock the princess seam allowances, keeping the side front and side back pieces facing up. Overlock the center back seam allowances, keeping the left center back piece facing up. Overlock the side seam allowances, keeping the assembled back piece facing up.

Press the seams.



Press the front princess seam allowances towards the center front.

Press the side seam allowances towards the side front.

Press the back princess seam allowances towards the center back.

Press the center back seam allowances towards the right-hand side.



Place the upper collar and undercollar pieces right sides together. Align and pin the outer edges, matching the notches.