

FROM THE FOUNDER OF THE #VIKISEWS BRAND



Back in 2016, when I was working on my first set of sewing instructions, I was trying to write them in such a way that even a complete beginner could easily understand and use them to create their very first garment. These instructions laid the foundation for the Vikisews brand, its vision and its mission. I wanted to create modern patterns with the utmost detailed and clear instructions.

Now, with each new collection we are constantly improving our instructions, amending them and adding more relevant details. By the time the final product reaches you, our drafters, correctors, and editors would have spent weeks perfecting every word and every photograph. If you compile a few of our instructions together, you will get a sewing manual that will assist you in sewing all kinds of garments at any difficulty level.

And I would be very happy if these instructions helped you to turn your hobby into a lifelong passion... Enjoy the process! Create your ultimate dream wardrobe! Wear your garments proudly for years to come!

If you have any questions, please contact us at info@vikisews.com — we are always there to help.



TALIA PATTERN DESCRIPTION

Talia is a voluminous 4-gore skirt flared towards the bottom. The skirt has no waistband and sits below the natural waistline. The top edge on the front and back is finished with fully lined shaped yokes made of the main fabric. The garment closes with an invisible zipper in the left side seam. Talia is above-ankle length.



IMPORTANT!

The contents of this pattern are copyright protected and belong exclusively to Vikisews. You may use Vikisews patterns for personal use. It is prohibited to share Vikisews patterns and instructions with third parties, as well as to publish patterns and instructions online for public access. **Non-compliance with the mentioned rules is a violation of the US copyright law and may result in civil liability and criminal prosecution.**

You may use Vikisews patterns for commercial use, to sew custom-made garments and/or create fashion collections, on the condition that the patterns are solely used in a manufacturing setting and are not further shared with individuals.

TOTAL EASE ALLOWANCE

	Waistline ease	Hipline ease
cm	3.6	17.5–20.1
inches	1 3/8	6 7/8–7 7/8

GARMENT LENGTH

Height, cm	Garment length, cm	Height, ft	Garment length, in
1 (154–160)	87	1 (5'1"–5'3")	34 1/4
2 (162–168)	91	2 (5'4"–5'6")	35 7/8
3 (170–176)	95	3 (5'7"–5'9")	37 3/8
4 (178–184)	99	4 (5'10"–6'1")	39

SUGGESTED FABRIC

To sew this skirt, choose dress-weight or suiting fabrics with the following properties: medium-weight, structured, non-stretch, opaque, made of natural, artificial, synthetic fibers, or blends.

The following fabrics are recommended: shirting, cady, suiting, brocade, taffeta, satin.

Attention! We do not recommend stretchy knit fabrics and lightweight sheer fabrics (chiffon, organza, stretch lace).

The skirt in the photo is made of taffeta. The fabric is medium weight, structured, soft, and without stretch. The fiber content is 100% silk. The fabric weight is 110 g/m².

FABRIC AND NOTIONS REQUIREMENTS

1. Main fabric, 140 cm wide, with a directional print/nap, in meters:

Height, cm	Size					
	34-38	40-42	44-46	48	50	52
1 (154-160)	2.45	2.5	2.6	2.6	2.6	2.6
2 (162-168)	2.55	2.65	2.7	2.7	2.7	2.8
3 (170-176)	2.65	2.75	2.8	2.8	2.9	2.95
4 (178-184)	2.75	2.9	2.9	3	3.05	3.1

Main fabric, 150 cm wide, with a directional print/nap, in meters:

Height, cm	Size						
	34	36	38-42	44-46	48	50	52
1 (154-160)	2.2	2.25	2.3	2.4	2.4	2.4	2.45
2 (162-168)	2.4	2.4	2.4	2.5	2.5	2.7	2.7
3 (170-176)	2.5	2.5	2.5	2.6	2.65	2.8	2.85
4 (178-184)	2.65	2.65	2.65	2.7	2.8	2.9	2.95

Main fabric, 55" wide, with a directional print/nap, in yards:

Height, ft	Size					
	34-38	40-42	44-46	48	50	52
1 (5'1"-5'3")	2 5/8	2 3/4	2 7/8	2 7/8	2 7/8	2 7/8
2 (5'4"-5'6")	2 3/4	2 7/8	3	3	3	3
3 (5'7"-5'9")	2 7/8	3	3	3	3 1/8	3 1/4
4 (5'10"-6'1")	3	3 1/8	3 1/8	3 1/4	3 3/8	3 3/8

Main fabric, 59" wide, with a directional print/nap, in yards:

Height, ft	Size				
	34	36-42	44-48	50	52
1 (5'1"-5'3")	2 3/8	2 1/2	2 5/8	2 5/8	2 5/8
2 (5'4"-5'6")	2 5/8	2 5/8	2 3/4	3	3
3 (5'7"-5'9")	2 3/4	2 3/4	2 7/8	3	3 1/8
4 (5'10"-6'1")	2 7/8	2 7/8	3	3 1/8	3 1/4

IMPORTANT! When purchasing fabric, please account for shrinkage and buy 5% more than required.

2. Lightweight interfacing, knit or woven, 140 cm (55") wide, for all sizes in all heights — 0.5 m (1/2 yd)
3. Stitched bias-cut fusible stay tape with stitch reinforcement, 1.5 cm (5/8") wide — 1.5 m (1 5/8 yd)
4. One invisible zipper, 30 cm (11 3/4") long, for all sizes in all heights
5. One hook-and-eye closure
6. Matching thread — 4 spools (1 spool for the sewing machine + 3 spools for the overlocker)

TOOLS AND EQUIPMENT

- sewing machine for construction
- overlocker for finishing raw edges. This may be replaced with a stretch overlock stitch or a zigzag stitch on the sewing machine (overlock or zigzag stitch width 2–3 mm, stitch length 2.5 mm)
- invisible zipper foot for the sewing machine

PATTERN PIECES LIST

1. From main fabric:

- front yoke — cut 2 on fold
- back yoke — cut 2 on fold
- center front / center back — cut 2
- side front — cut 2
- side back — cut 2

2. From interfacing:

- front yoke — cut 2 on fold
- back yoke — cut 2 on fold

IMPORTANT! Don't forget to transfer all pattern markings and notches onto the fabric.

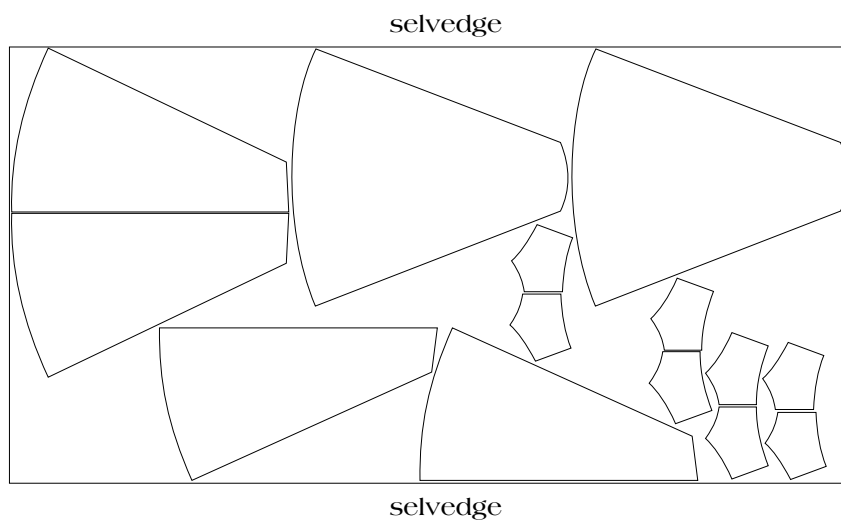
SEAM ALLOWANCES

All pattern pieces include 1 cm (3/8") seam allowances.

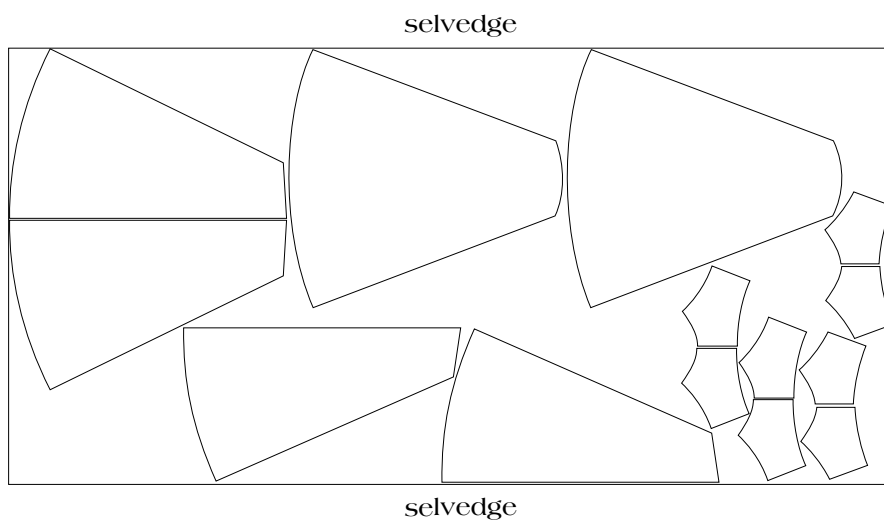
Take this into account when laying out pattern pieces on the fabric.

CUTTING LAYOUT

Main fabric, 140 cm (55") wide, with a directional print/nap,
cut on a single layer, for sizes 34–38 in all heights

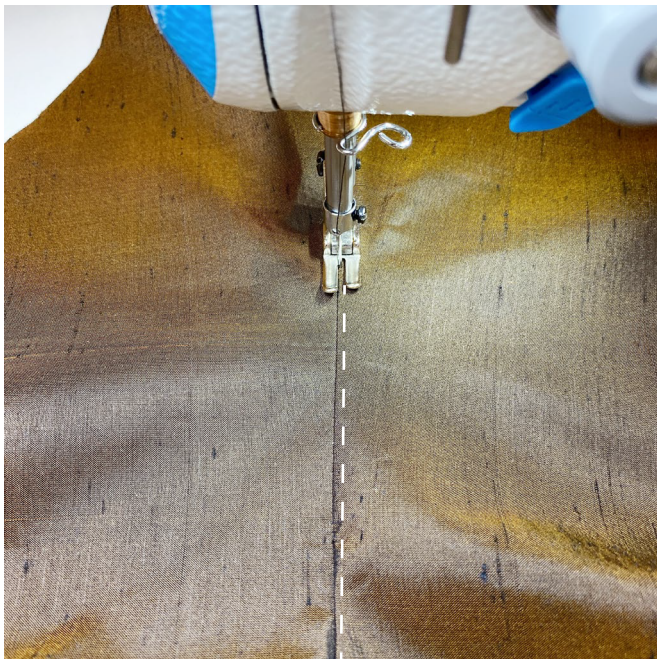


Main fabric, 140 cm (55") wide, with a directional print/nap,
cut on a single layer, for sizes 40–42 in all heights





Press the seam allowances towards the inner yoke.



Working from the right side of the inner yoke, understitch the seam allowances at 1–2 mm from the seam. Backstitch at the beginning and end of the seam.



Turn the assembled yoke right side out. Press the top edge while rolling the seam towards the inner yoke by 1–2 mm.