

FROM THE FOUNDER OF THE #VIKISEWS BRAND

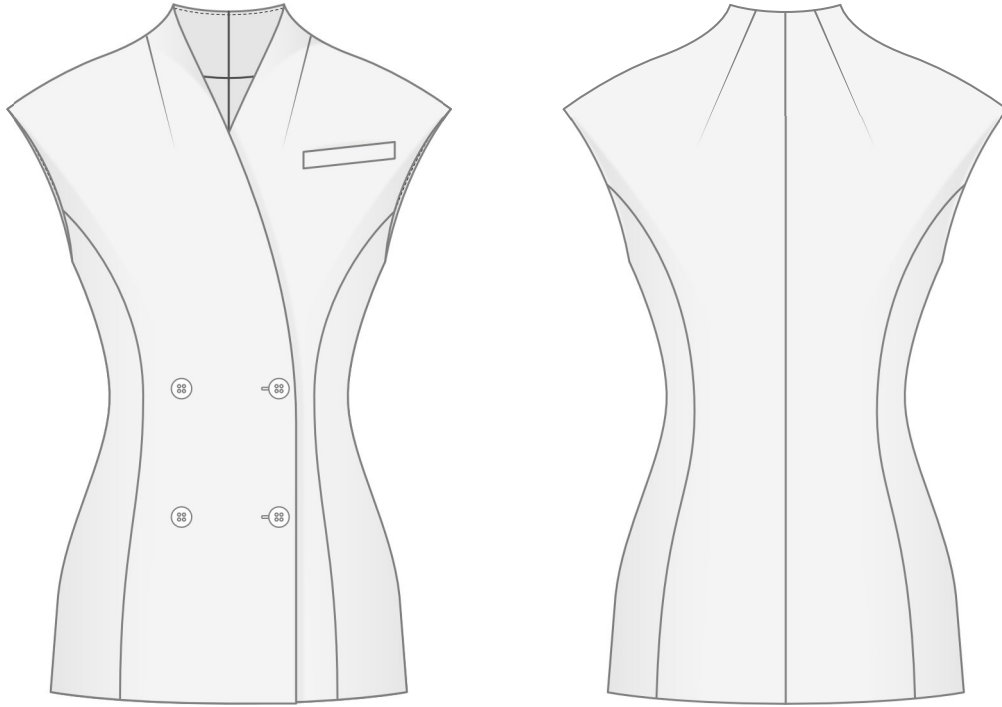


Back in 2016, when I was working on my first set of sewing instructions, I was trying to write them in such a way that even a complete beginner could easily understand and use them to create their very first garment. These instructions laid the foundation for the Vikisews brand, its vision and its mission. I wanted to create modern patterns with the utmost detailed and clear instructions.

Now, with each new collection we are constantly improving our instructions, amending them and adding more relevant details. By the time the final product reaches you, our drafters, correctors, and editors would have spent weeks perfecting every word and every photograph. If you compile a few of our instructions together, you will get a sewing manual that will assist you in sewing all kinds of garments at any difficulty level.

And I would be very happy if these instructions helped you to turn your hobby into a lifelong passion... Enjoy the process! Create your ultimate dream wardrobe! Wear your garments proudly for years to come!

If you have any questions, please contact us at info@vikisews.com — we are always there to help.



LAVERNE PATTERN DESCRIPTION

Laverne is a fully lined, semi-fitted vest with a defined waist and an extended shoulder line. The front is shaped with princess seams and features a welt chest pocket with sewn-on ends on the left side. At the back, the vest is shaped with princess seams and a center seam. The garment has a grown-on stand collar and a double-breasted button front closure. Laverne is below-hip length.



IMPORTANT!

The contents of this pattern are copyright protected and belong exclusively to Vikisews. You may use Vikisews patterns for personal use. It is prohibited to share Vikisews patterns and instructions with third parties, as well as to publish patterns and instructions online for public access. **Non-compliance with the mentioned rules is a violation of the US copyright law and may result in civil liability and criminal prosecution.**

You may use Vikisews patterns for commercial use, to sew custom-made garments and/or create fashion collections, on the condition that the patterns are solely used in a manufacturing setting and are not further shared with individuals.

TOTAL EASE ALLOWANCE

| | Bust ease | Waistline ease | Hipline ease |
|--------|-------------|----------------|--------------|
| cm | 7–3.9 | 8.8–10.3 | 14.1–10.8 |
| inches | 2 3/4–1 1/2 | 3 1/2–4 | 5 1/2–4 1/4 |

GARMENT LENGTH

| Height, cm | Back length from waist down, cm |
|-------------|---------------------------------|
| 1 (154–160) | 25.6–27 |
| 2 (162–168) | 28.4–31.6 |
| 3 (170–176) | 31.6–33 |
| 4 (178–184) | 34.6–36 |

| Height, ft | Back length from waist down, in |
|----------------|---------------------------------|
| 1 (5'1"–5'3") | 10 1/8–10 5/8 |
| 2 (5'4"–5'6") | 11 1/8–12 1/2 |
| 3 (5'7"–5'9") | 12 1/2–13 |
| 4 (5'10"–6'1") | 13 5/8–14 1/8 |

SUGGESTED FABRIC

To sew this vest, choose suiting fabrics with the following properties:

- medium-weight, soft, non-stretch or low-stretch, opaque
- the fiber content can include natural fibers (wool, cotton, silk), blends (wool + polyester, cotton + polyester, etc.), and synthetics (polyester)
- the following fabrics are recommended: wool suiting, crepe, gabardine.

For the lining, choose lining fabrics made of natural fibers (silk), artificial fibers (viscose), synthetics (polyester), or blends (viscose + polyester, silk + viscose, viscose + elastane).

The vest in the photo is made of wool suiting. The fabric is medium weight, soft, and without stretch. The fiber content is 70% wool and 30% polyester. The fabric weight is 250 g/m².

The lining is a blend of 55% viscose and 45% polyester. The lining fabric weight is 90 g/m².

FABRIC AND NOTIONS REQUIREMENTS

1. Main fabric, 140 cm wide, with a directional print/nap, 200–250 g/m², in meters:

| Height, cm | Size | | | | | | |
|-------------|------|------|------|------|------|-------|-------|
| | 34 | 36 | 38 | 40 | 42 | 44–48 | 50–52 |
| 1 (154–160) | 1.25 | 1.35 | 1.4 | 1.4 | 1.45 | 1.5 | 1.5 |
| 2 (162–168) | 1.35 | 1.4 | 1.5 | 1.5 | 1.45 | 1.6 | 1.6 |
| 3 (170–176) | 1.4 | 1.45 | 1.55 | 1.55 | 1.6 | 1.65 | 1.65 |
| 4 (178–184) | 1.5 | 1.5 | 1.6 | 1.65 | 1.7 | 1.7 | 1.75 |

Main fabric, 55" wide, with a directional print/nap, 200–250 g/m², in yards:

| Height, ft | Size | | | | |
|----------------|-------|-------|-------|-------|-------|
| | 34 | 36 | 38–40 | 42 | 44–52 |
| 1 (5'1"–5'3") | 1 3/8 | 1 1/2 | 1 1/2 | 1 5/8 | 1 5/8 |
| 2 (5'4"–5'6") | 1 1/2 | 1 1/2 | 1 5/8 | 1 5/8 | 1 3/4 |
| 3 (5'7"–5'9") | 1 1/2 | 1 5/8 | 1 3/4 | 1 3/4 | 1 3/4 |
| 4 (5'10"–6'1") | 1 5/8 | 1 5/8 | 1 3/4 | 1 7/8 | 1 7/8 |

2. Lining fabric, 140 cm wide, 90 g/m², in meters:

| Height, cm | Size | | | | | |
|-------------|------|------|-------|------|-------|-------|
| | 34 | 36 | 38–40 | 42 | 44–48 | 50–52 |
| 1 (154–160) | 0.7 | 0.75 | 0.75 | 0.75 | 0.75 | 0.8 |
| 2 (162–168) | 0.75 | 0.75 | 0.8 | 0.8 | 0.8 | 0.85 |
| 3 (170–176) | 0.8 | 0.8 | 0.8 | 0.85 | 0.85 | 0.85 |
| 4 (178–184) | 0.85 | 0.85 | 0.85 | 0.85 | 0.9 | 0.9 |

Lining fabric, 55" wide, 90 g/m², in yards:

| Height, ft | Size | | |
|----------------|------|-------|-------|
| | 34 | 36–42 | 44–52 |
| 1 (5'1"–5'3") | 3/4 | 7/8 | 7/8 |
| 2 (5'4"–5'6") | 7/8 | 7/8 | 7/8 |
| 3 (5'7"–5'9") | 7/8 | 7/8 | 7/8 |
| 4 (5'10"–6'1") | 7/8 | 7/8 | 1 |

IMPORTANT! When purchasing fabric, please account for shrinkage and buy 5% more than required.

3. Lightweight knit or woven interfacing, 140 cm wide, 40 g/m², in meters:

| Height, cm | Size | | | | | | |
|-------------|------|------|------|------|------|-------|-------|
| | 34 | 36 | 38 | 40 | 42 | 44–48 | 50–52 |
| 1 (154–160) | 1.25 | 1.35 | 1.4 | 1.4 | 1.45 | 1.5 | 1.5 |
| 2 (162–168) | 1.35 | 1.4 | 1.5 | 1.5 | 1.45 | 1.6 | 1.6 |
| 3 (170–176) | 1.4 | 1.45 | 1.55 | 1.55 | 1.6 | 1.65 | 1.65 |
| 4 (178–184) | 1.5 | 1.5 | 1.6 | 1.65 | 1.7 | 1.7 | 1.75 |

Lightweight knit or woven interfacing, 55" wide, 40 g/m², in yards:

| Height, ft | Size | | | | |
|----------------|-------|-------|-------|-------|-------|
| | 34 | 36 | 38–40 | 42 | 44–52 |
| 1 (5'1"–5'3") | 1 3/8 | 1 1/2 | 1 1/2 | 1 5/8 | 1 5/8 |
| 2 (5'4"–5'6") | 1 1/2 | 1 1/2 | 1 5/8 | 1 5/8 | 1 3/4 |
| 3 (5'7"–5'9") | 1 1/2 | 1 5/8 | 1 3/4 | 1 3/4 | 1 3/4 |
| 4 (5'10"–6'1") | 1 5/8 | 1 5/8 | 1 3/4 | 1 7/8 | 1 7/8 |

4. Stitched bias-cut fusible stay tape with stitch reinforcement, 1.5 cm (5/8") wide — 2.1–2.92 m (2 1/4–3 1/4 yd)

5. Four buttons, 2–2.2 cm (3/4–7/8") in diameter

6. One button, 0.7–1 cm (1/4–3/8") in diameter

7. Matching thread for the main fabric — 1 spool for the sewing machine

8. Matching thread for the lining fabric — 1 spool for the sewing machine

TOOLS AND EQUIPMENT

- sewing machine for construction
- buttonhole foot for the sewing machine
- stitch-in-the-ditch foot for the sewing machine (optional)

PATTERN PIECES LIST

1. From main fabric:

- center front — cut 2
- side front — cut 2
- center back — cut 2
- side back — cut 2
- front facing — cut 2
- back neck facing — cut 2
- front armscye facing — cut 2
- back armscye facing — cut 2
- pocket top lining — cut 1
- welt — cut 1

2. From lining fabric:

- front lining — cut 2
- back lining — cut 1 on fold
- pocket bottom lining — cut 1

IMPORTANT! Don't forget to transfer all pattern markings and notches onto the fabric.

3. From interfacing:

- center front — cut 2
- side front — cut 2
- center back — cut 2
- side back — cut 2
- front facing — cut 2
- back neck facing — cut 2
- front armscye facing — cut 2
- back armscye facing — cut 2
- welt — cut 1
- center front (partially, 2nd interfacing layer) — cut 2
- center back (partially, 2nd interfacing layer) — cut 2
- pocket interfacing strip — cut 1

SEAM ALLOWANCES

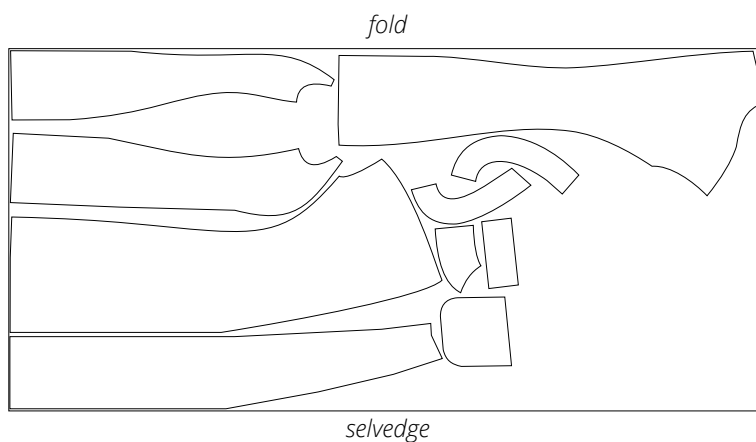
All pattern pieces include seam allowances as follows:

- garment hem allowance — 4 cm (1 5/8")
- pocket lining edges — 1.5 cm (5/8")
- all other edges — 1 cm (3/8").

Take this into account when laying out pattern pieces on the fabric.

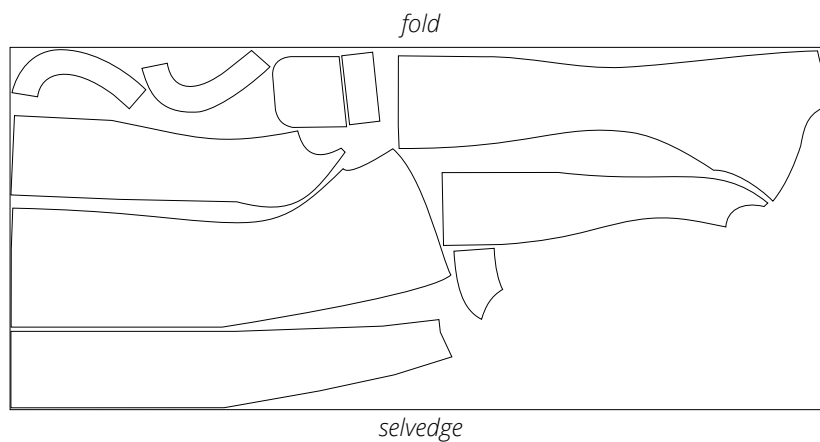
CUTTING LAYOUT

Main fabric, 140 cm (55") wide, with a directional print/nap,
cut on fold, for size 34 in all heights



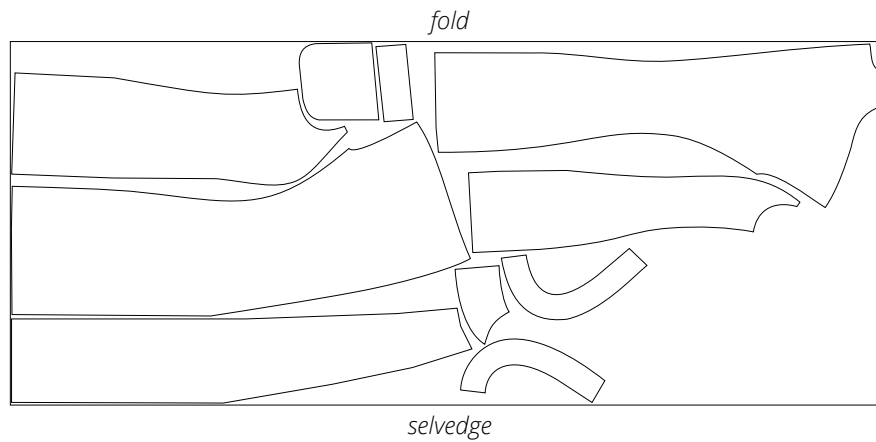
Attention! Cut one each of the pocket top lining and welt pieces.

Main fabric, 140 cm (55") wide, with a directional print/nap,
cut on fold, for sizes 36–38 in all heights



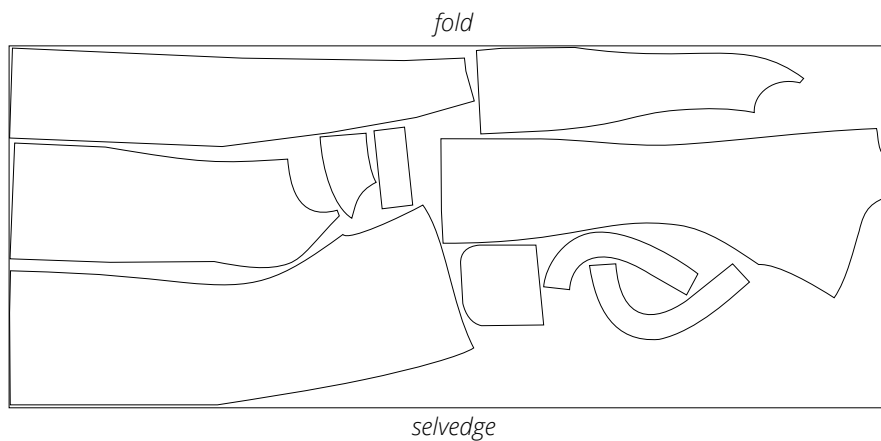
Attention! Cut one each of the pocket top lining and welt pieces.

Main fabric, 140 cm (55") wide, with a directional print/nap,
cut on fold, for sizes 40–46 in all heights



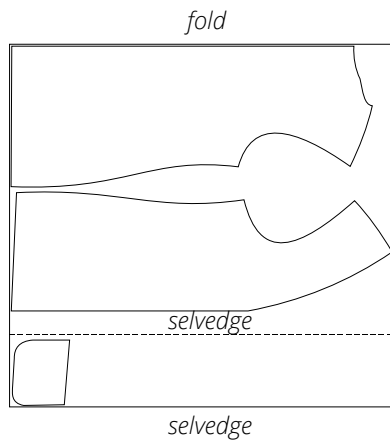
Attention! Cut one each of the pocket top lining and welt pieces.

Main fabric, 140 cm (55") wide, with a directional print/nap,
cut on fold, for sizes 48–52 in all heights



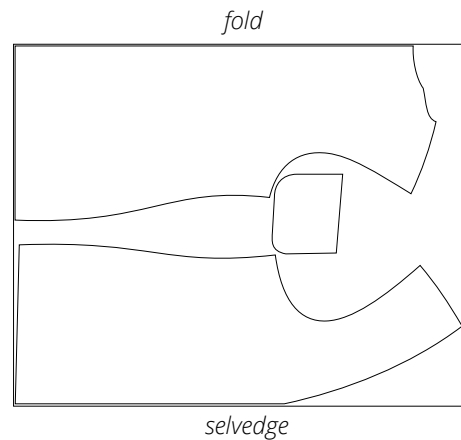
Attention! Cut one each of the pocket top lining and welt pieces.

Lining fabric, 140 cm (55") wide, with a directional print, cut on a partial fold, for sizes 34–44 in all heights



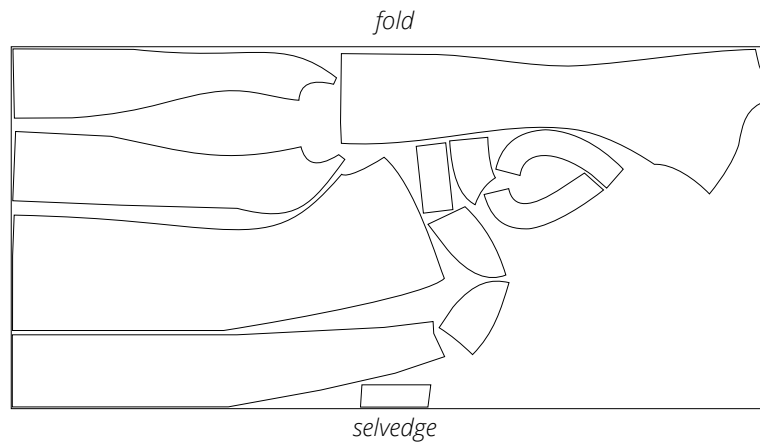
Attention! Cut only one pocket bottom lining piece.

Lining fabric, 140 cm (55") wide, with a directional print, cut on fold, for sizes 46–52 in all heights



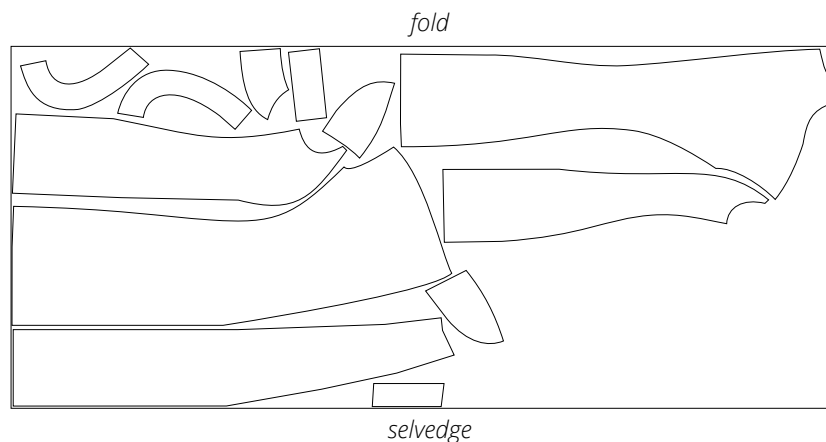
Attention! Cut only one pocket bottom lining piece.

Interfacing, 140 cm (55") wide, cut on fold and in one direction, for size 34 in all heights



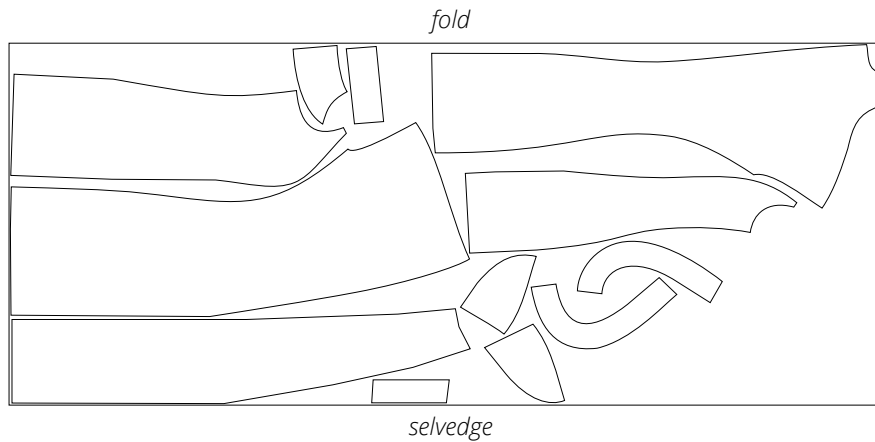
Attention! Cut one each of the pocket interfacing strip and welt pieces.

Interfacing, 140 cm (55") wide, cut on fold and in one direction, for sizes 36–38 in all heights



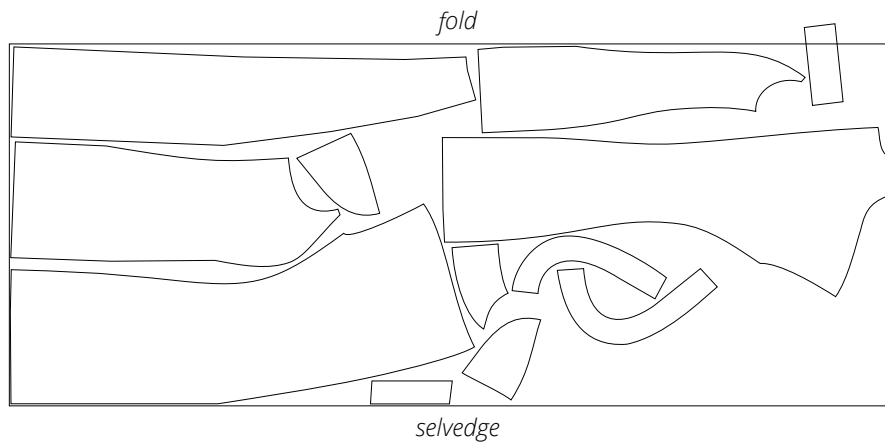
Attention! Cut one each of the pocket interfacing strip and welt pieces.

Interfacing, 140 cm (55") wide, cut on fold and in one direction,
for sizes 40–46 in all heights



Attention! Cut one each of the pocket interfacing strip and welt pieces.

Interfacing, 140 cm (55") wide, cut on fold and in one direction,
for sizes 48–52 in all heights

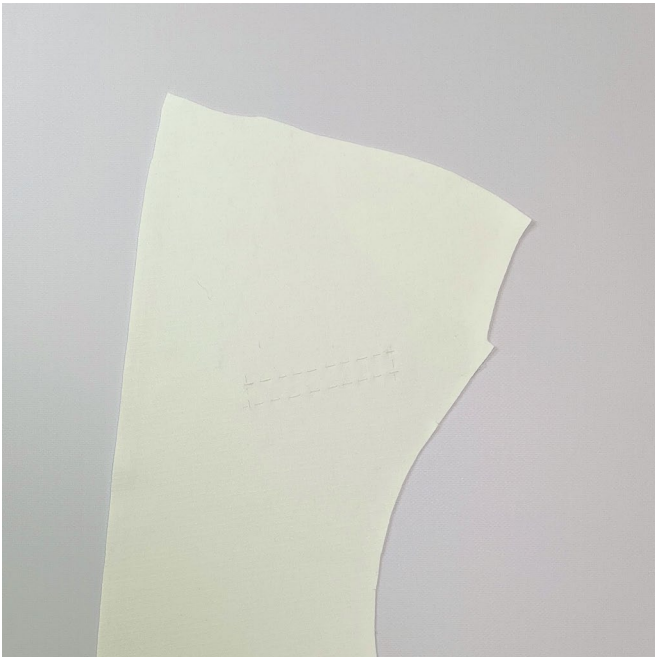


Attention! Cut one each of the pocket interfacing strip and welt pieces.
Cut the welt piece on a single layer out of leftover fabric.

READY? LET'S GET SEWING!



Transfer the dart lines from the pattern to the wrong side of the center front piece.



Transfer the pocket opening lines from the pattern to the wrong side of the left center front piece. Trace-baste along the marked pocket opening lines.



Match up the dart legs on the wrong side of the center front piece. Pin.

Machine-stitch the dart, backstitching only at the beginning of the seam, i.e. at the raw edge. Leave long thread tails at the dart point.

Tie the thread tails into a knot and hide them inside the dart bulk using a needle.