

# FROM THE FOUNDER OF THE #VIKISEWS BRAND

---

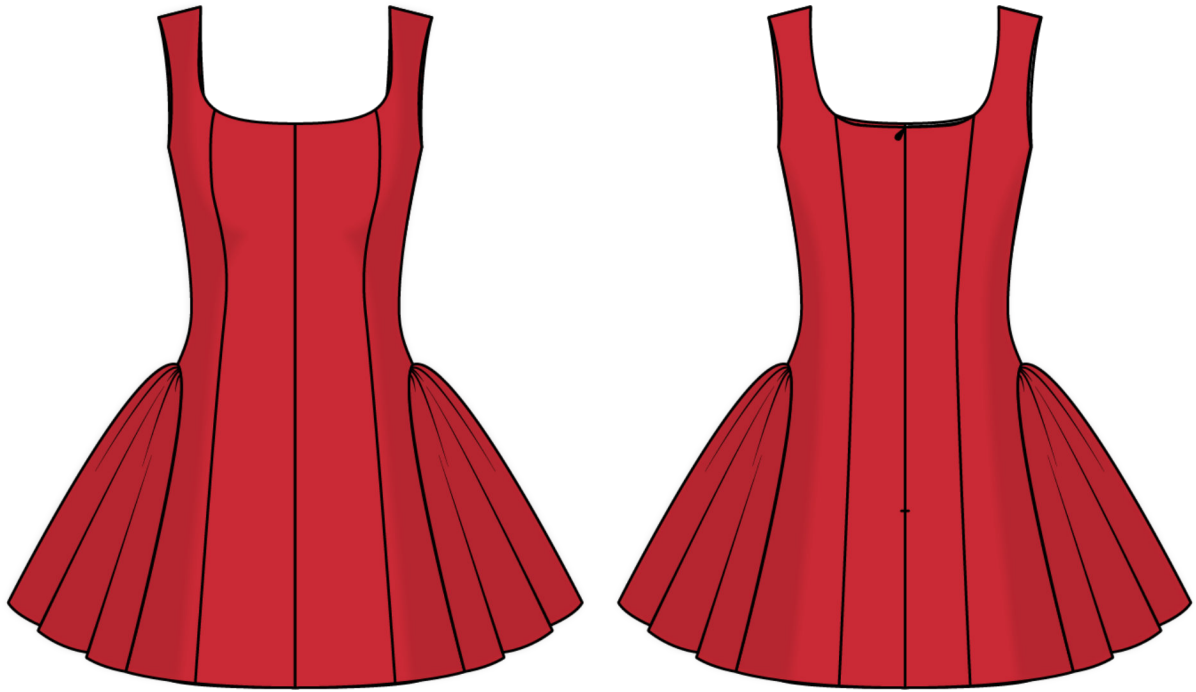


Back in 2016, when I was working on my first set of sewing instructions, I was trying to write them in such a way that even a complete beginner could easily understand and use them to create their very first garment. These instructions laid the foundation for the Vikisews brand, its vision and its mission. I wanted to create modern patterns with the utmost detailed and clear instructions.

Now, with each new collection we are constantly improving our instructions, amending them and adding more relevant details. By the time the final product reaches you, our drafters, correctors, and editors would have spent weeks perfecting every word and every photograph. If you compile a few of our instructions together, you will get a sewing manual that will assist you in sewing all kinds of garments at any difficulty level.

And I would be very happy if these instructions helped you to turn your hobby into a lifelong passion... Enjoy the process! Create your ultimate dream wardrobe! Wear your garments proudly for years to come!

If you have any questions, please contact us at [info@vikisews.com](mailto:info@vikisews.com) — we are always there to help.



## ROSIE PATTERN DESCRIPTION

---

Rosie is a semi-fitted dress with an accentuated waist and a skirt that flares out towards the bottom. The flaring of the skirt is achieved with additional pieces gathered at the top and inserted into the side seams of the dress. The front and back feature princess and center seams. There is an invisible zipper in the center back seam. The dress has a deep square neckline and a free-hanging lining. Rosie is above-knee length.



## IMPORTANT!

---

The contents of this pattern are copyright protected and belong exclusively to Vikisews. You may use Vikisews patterns for personal use. It is prohibited to share Vikisews patterns and instructions with third parties, as well as to publish patterns and instructions online for public access. **Non-compliance with the mentioned rules is a violation of the US copyright law and may result in civil liability and criminal prosecution.**

You may use Vikisews patterns for commercial use, to sew custom-made garments and/or create fashion collections, on the condition that the patterns are solely used in a manufacturing setting and are not further shared with individuals.

## TOTAL EASE ALLOWANCE

	Bust ease	Waistline ease	Hipline ease
cm	1.8–4.7	2.3–6.6	59.5–78
inches	3/4–1 7/8	7/8–2 5/8	23 3/8–30 3/4

## GARMENT LENGTH

Height, cm	Back length from waist down, cm	Height, ft	Back length from waist down, in
1 (154–160)	37.9–42.2	1 (5'1"–5'3")	14 7/8–16 5/8
2 (162–168)	40.9–45.2	2 (5'4"–5'6")	16 1/8–17 3/4
3 (170–176)	44–48.3	3 (5'7"–5'9")	17 3/8–19
4 (178–184)	47–51.3	4 (5'10"–6'1")	18 1/2–20 1/4

## SUGGESTED FABRIC

To sew this dress, choose medium-weight, pliable, structured, non-stretch or low-stretch dress-weight and suiting fabrics made of natural fibers, artificial fibers, blends, or synthetics.

The following fabrics are recommended: wool suiting, gabardine, jacquard.

**Attention!** We do not recommend stretchy, soft, lightweight (dress-weight wool), and loosely woven heavyweight suiting fabrics.

For the lining, we recommend lining fabrics made of artificial fibers, synthetic fibers, or blends.

The dress in the photo is made of wool suiting. The fabric is medium weight, structured, and low-stretch. The fiber content is a blend of wool (70%) and polyester (30%). The fabric weight is 250 g/m<sup>2</sup>.

The fiber content of the lining is 100% viscose. The fabric weight is 130 g/m<sup>2</sup>.

# FABRIC AND NOTIONS REQUIREMENTS

1. Main fabric, 140 cm wide, 250–280 g/m<sup>2</sup>, with a directional print/nap, in meters:

Height, cm	Size						
	34–36	38	40–42	44	46	48	50–52
1 (154–160)	1.2	1.25	1.3	1.5	1.6	1.6	1.65
2 (162–168)	1.25	1.3	1.4	1.6	1.65	1.7	1.7
3 (170–176)	1.35	1.35	1.45	1.7	1.75	1.75	1.8
4 (178–184)	1.4	1.45	1.55	1.75	1.8	1.8	1.85

Main fabric, 55" wide, 250–280 g/m<sup>2</sup>, with a directional print/nap, in yards:

Height, ft	Size						
	34–36	38	40–42	44	46	48	50–52
1 (5'1"–5'3")	1 1/4	1 3/8	1 3/8	1 5/8	1 3/4	1 3/4	1 3/4
2 (5'4"–5'6")	1 3/8	1 3/8	1 1/2	1 3/4	1 3/4	1 7/8	1 7/8
3 (5'7"–5'9")	1 1/2	1 1/2	1 5/8	1 7/8	1 7/8	1 7/8	2
4 (5'10"–6'1")	1 1/2	1 5/8	1 3/4	1 7/8	2	2	2

2. Lining fabric, 140 cm wide, 90–130 g/m<sup>2</sup>, in meters:

Height, cm	Size				
	34	36–42	44–46	48–50	52
1 (154–160)	1.1	1.2	1.5	1.5	1.55
2 (162–168)	1.15	1.25	1.55	1.6	1.65
3 (170–176)	1.2	1.3	1.65	1.65	1.7
4 (178–184)	1.25	1.35	1.7	1.75	1.8

Lining fabric, 55" wide, 90–130 g/m<sup>2</sup>, in yards:

Height, ft	Size			
	34	36–42	44–50	52
1 (5'1"–5'3")	1 1/4	1 1/4	1 5/8	1 3/4
2 (5'4"–5'6")	1 1/4	1 3/8	1 3/4	1 3/4
3 (5'7"–5'9")	1 1/4	1 3/8	1 3/4	1 7/8
4 (5'10"–6'1")	1 3/8	1 1/2	1 7/8	2

**IMPORTANT!** When purchasing fabric, please account for shrinkage and buy 5% more than required.

3. Knit or woven lightweight interfacing, 140 cm (55") wide, 40 g/m<sup>2</sup>, for all heights:

Size	34-46	48-52
Meters	0.3	0.35
Yards	3/8	3/8

4. Stitched bias-cut fusible stay tape with stitch reinforcement, 1.5 cm (5/8") wide — 2.6–3.2 m (2 7/8–3 1/2 yd)

5. One invisible zipper, 40 cm (15 3/4") long, for all sizes in all heights

6. One hook-and-eye

7. Matching thread for the main fabric — 5 spools (1 spool for the sewing machine + 4 spools for the overlocker)

8. Matching thread for the lining fabric — 5 spools (1 spool for the sewing machine + 4 spools for the overlocker)

## TOOLS AND EQUIPMENT

- sewing machine for construction
- overlocker for finishing raw edges. This may be replaced with a stretch overlock stitch or a zigzag stitch on the sewing machine (overlock or zigzag stitch width 2–3 mm, stitch length 2.5 mm)
- stitch-in-the-ditch foot for the sewing machine (optional)
- invisible zipper foot for the sewing machine
- one-sided foot for the sewing machine

# PATTERN PIECES LIST

---

## 1. From main fabric:

- center front — cut 2
- side front — cut 2
- center back — cut 2
- side back — cut 2
- side skirt — cut 2

***IMPORTANT!** Don't forget to transfer all pattern markings and notches onto the fabric.*

## 2. From lining fabric:

- center front lining — cut 1 on fold
- side front lining — cut 2
- center back lining — cut 2
- side back lining — cut 2
- side skirt lining — cut 2

## 3. From interfacing:

- center front (partially) — cut 2
- center back (partially) — cut 2

# SEAM ALLOWANCES

---

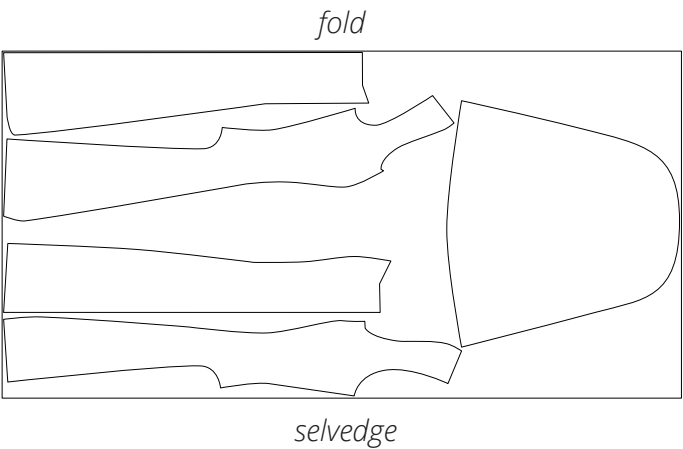
All pattern pieces include seam allowances as follows:

- garment hem allowance — 3.5 cm (1 3/8")
- all other edges — 1 cm (3/8")

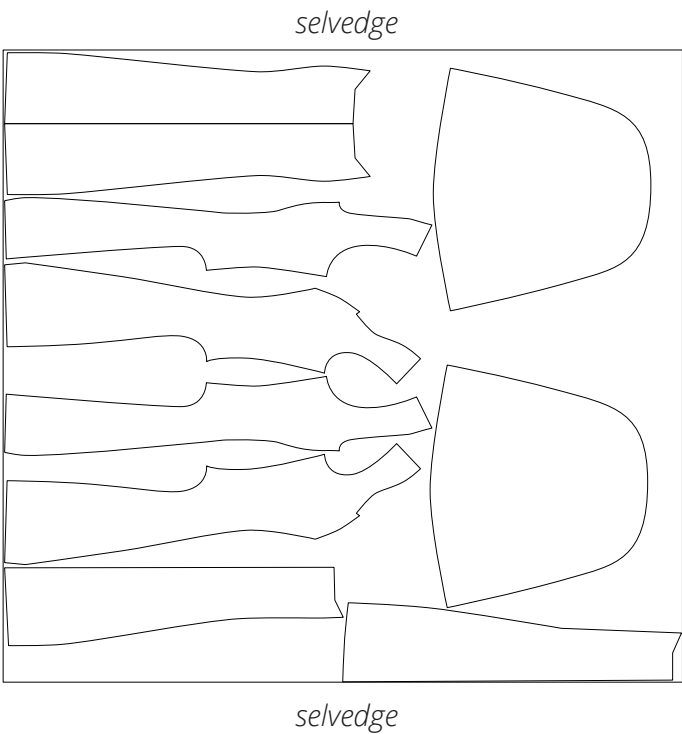
Take this into account when laying out pattern pieces on the fabric.

# CUTTING LAYOUT

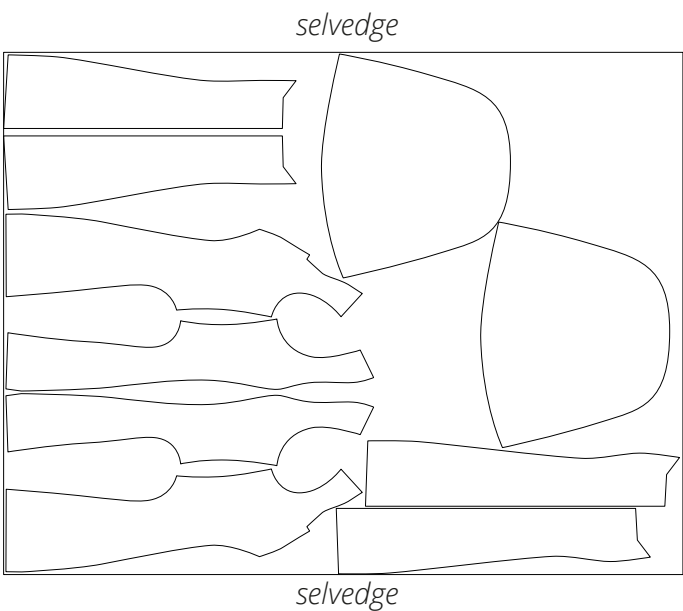
Main fabric, 140 cm (55") wide, with a directional print/nap, cut on fold, for sizes 34–36 in all heights



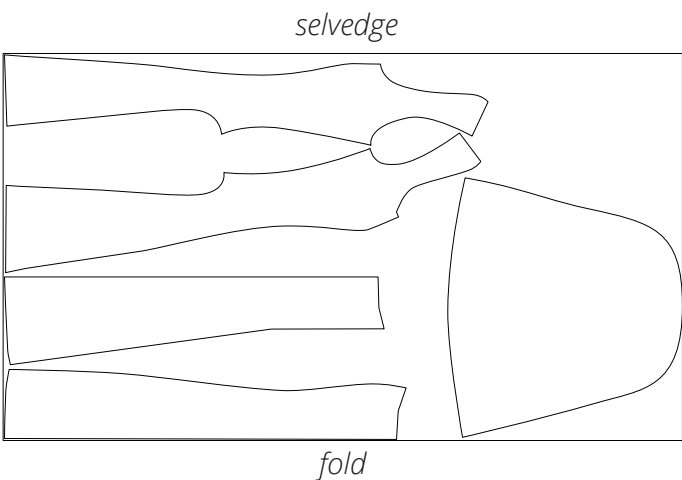
Main fabric, 140 cm (55") wide, with a directional print/nap, cut on a single layer, for sizes 38–42 in all heights



Main fabric, 140 cm (55") wide, with a directional print/nap, cut on a single layer, for sizes 44–52 in all heights

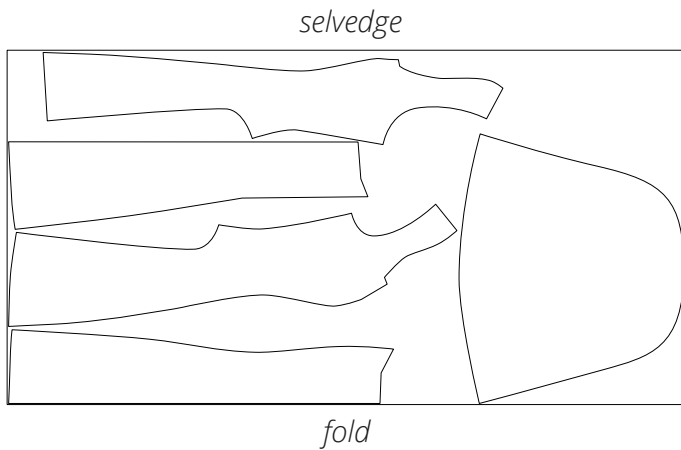


Lining fabric, 140 cm (55") wide, with a directional print, cut on fold, for size 34 in all heights

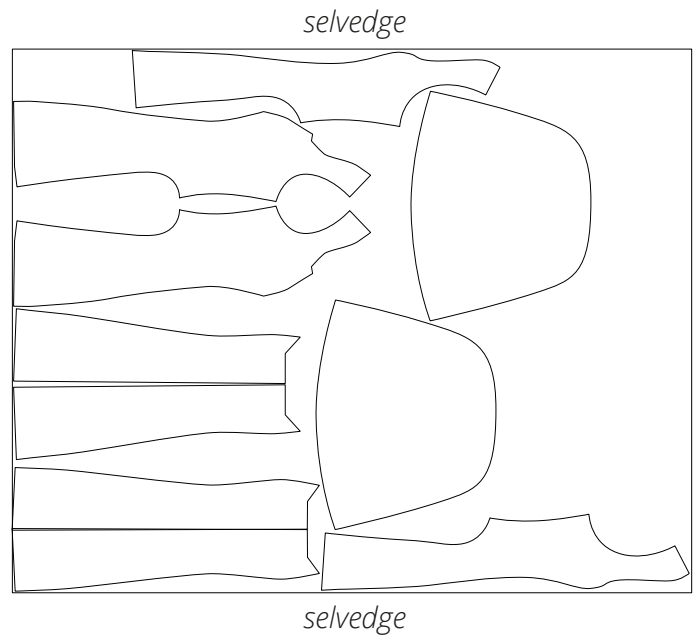




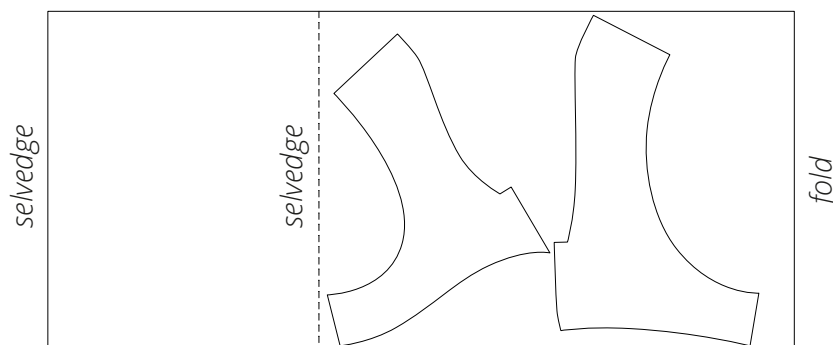
Lining fabric, 140 cm (55") wide, with a directional print, cut on fold, for sizes 36–42 in all heights



Lining fabric, 140 cm (55") wide, with a directional print, cut on a single layer, for sizes 44–52 in all heights



Interfacing, 140 cm (55") wide, cut on a partial fold in one direction, for all sizes in all heights



**READY? LET'S GET SEWING!**



Place the assembled front and back pieces right sides together, align the side edges, match the notches, and pin.

Machine-stitch, backstitching at the beginning and end of the seam.



Press the side seam allowances open.



Clip 8 mm (just under 3/8") into the curved section of the seam allowance on the assembled side piece.