

# FROM THE FOUNDER OF THE #VIKISEWS BRAND

---



Back in 2016, when I was working on my first set of sewing instructions, I was trying to write them in such a way that even a complete beginner could easily understand and use them to create their very first garment. These instructions laid the foundation for the Vikisews brand, its vision and its mission. I wanted to create modern patterns with the utmost detailed and clear instructions.

Now, with each new collection we are constantly improving our instructions, amending them and adding more relevant details. By the time the final product reaches you, our drafters, correctors, and editors would have spent weeks perfecting every word and every photograph. If you compile a few of our instructions together, you will get a sewing manual that will assist you in sewing all kinds of garments at any difficulty level.

And I would be very happy if these instructions helped you to turn your hobby into a lifelong passion... Enjoy the process! Create your ultimate dream wardrobe! Wear your garments proudly for years to come!

If you have any questions, please contact us at [info@vikisews.com](mailto:info@vikisews.com) — we are always there to help.



## PRIYANKA PATTERN DESCRIPTION

---

Priyanka is a close-fitting dress with an accentuated waist. The dress consists of a bodice and skirt joined at the front only. The front bodice is made of lace and partially lined with the main fabric. The back bodice features a shaped bottom edge and a full-length slit at the center back. It closes with buttons and button loops at the top and bottom. The dress has a heart-shaped neckline. The close-fitting silhouette is achieved through a bias-cut design of the skirt that features waist darts and an invisible zipper in the center back seam. The short set-in sleeves are pleated at the cap and hem. Priyanka is ankle-length.



## IMPORTANT!

---

The contents of this pattern are copyright protected and belong exclusively to Vikisews. You may use Vikisews patterns for personal use. It is prohibited to share Vikisews patterns and instructions with third parties, as well as to publish patterns and instructions online for public access. **Non-compliance with the mentioned rules is a violation of the US copyright law and may result in civil liability and criminal prosecution.**

You may use Vikisews patterns for commercial use, to sew custom-made garments and/or create fashion collections, on the condition that the patterns are solely used in a manufacturing setting and are not further shared with individuals.

# TOTAL EASE ALLOWANCE

	Bust ease	Waistline ease	Hipline ease	Upper arm ease
cm	1.6 – (-0.9)	-4.2 – 1.1	0.1 – 8.1	6.7 – 1.8
inches	5/8 – (-3/8)	-1 5/8 – 3/8	0 – 3 1/4	2 5/8 – 3/4

# GARMENT LENGTH, SLEEVE LENGTH

Height, cm	Back length from waist down, cm	Sleeve length (estimated), cm
1 (154–160)	91.8–91.1	24.4–30.5
2 (162–168)	94.9–94.2	25.5–31.8
3 (170–176)	97.9–97.2	26.9–33.2
4 (178–184)	100.9–100.2	27.8–34.3

Height, ft	Back length from waist down, in	Sleeve length (estimated), in
1 (5'1"–5'3")	36 1/8–35 7/8	9 5/8–12
2 (5'4"–5'6")	37 3/8–37 1/8	10–12 1/2
3 (5'7"–5'9")	38 1/2–38 1/4	10 5/8–13 1/8
4 (5'10"–6'1")	39 3/4–39 1/2	11–13 1/2

# SUGGESTED FABRIC

To sew this dress, choose medium-weight, soft, non-stretch or low-stretch dress-weight fabrics made of natural, artificial, polyester, or blends.

The following fabrics are recommended: natural silk, artificial silk, sateen, dress-weight viscose, satin. As an additional fabric, we recommend using lace fabric or embroidered non-stretch mesh, either transparent or matching the main fabric.

The dress in the photo is made of artificial silk. The fabric is medium weight, soft, and low-stretch. The fiber content is 100% polyester. The fabric weight is 110 g/m<sup>2</sup>.

The additional fabric is lace fabric. It is medium weight, soft, and non-stretch. The fiber content is 100% synthetic fibers. The fabric weight is 125 g/m<sup>2</sup>.

# FABRIC AND NOTIONS REQUIREMENTS

1. Main fabric, 140 cm wide, 100–130 g/m<sup>2</sup>, with a directional print/nap, in meters:

Height, cm	Size									
	34	36	38	40	42	44	46	48	50	52
1 (154–160)	1.6	1.65	1.7	1.75	1.8	1.9	2	2.05	2.1	2.2
2 (162–168)	1.65	1.7	1.7	1.8	1.85	1.9	2.05	2.1	2.15	2.25
3 (170–176)	1.7	1.75	1.75	1.8	1.9	1.95	2.1	2.15	2.2	2.25
4 (178–184)	1.75	1.8	1.85	1.85	1.95	2.05	2.15	2.2	2.25	2.3

Main fabric, 55" wide, 100–130 g/m<sup>2</sup>, with a directional print/nap, in yards:

Height, ft	Size									
	34	36	38	40	42	44	46	48	50	52
1 (5'1"–5'3")	1 3/4	1 3/4	1 7/8	1 7/8	2	2 1/8	2 1/8	2 1/4	2 1/4	2 3/8
2 (5'4"–5'6")	1 3/4	1 7/8	1 7/8	2	2	2 1/8	2 1/4	2 1/4	2 3/8	2 1/2
3 (5'7"–5'9")	1 7/8	1 7/8	1 7/8	2	2 1/8	2 1/8	2 1/4	2 3/8	2 3/8	2 1/2
4 (5'10"–6'1")	1 7/8	2	2	2	2 1/8	2 1/4	2 3/8	2 3/8	2 1/2	2 1/2

2. Lace fabric, 70 cm (27") wide, 100–150 g/m<sup>2</sup>, with scallops on both edges, for all heights:

Size	34–42	44–52
meters	0.45	0.5
yards	1/2	1/2

**IMPORTANT!** The lace material requirement depends on the pattern repeat, type of embroidery (single-sided / double-sided), and the desired result. The table shows the requirement for the lace fabric used in this garment!

**IMPORTANT!** When purchasing fabric and lace, please account for shrinkage and buy 5% more than required.

- Corset mesh, 140 cm (55") wide, 52 g/m<sup>2</sup>, cut in one direction, for all sizes in all heights — 20 cm (7 7/8")
- Tulle, 150 cm (59") wide, 15–25 g/m<sup>2</sup>, cut in one direction, for all sizes in all heights — 20 cm (7 7/8")
- Lightweight interfacing, knit or woven, 140 cm (55") wide, 30 g/m<sup>2</sup>, for all sizes in all heights — 12 cm (4 3/4")
- Stitched bias-cut fusible stay tape with stitch reinforcement, 1.5 cm (5/8") wide — 51–75 cm (20 1/8–29 1/2")
- One invisible zipper, 19–21 cm (7 1/2–8 1/4") long, for all sizes in all heights
- One hook-and-eye
- Two buttons, 1–1.2 cm (3/8–1/2") in diameter
- Matching thread — 5 spools (1 spool for the sewing machine + 4 spools for the overlocker)

# TOOLS AND EQUIPMENT

---

- sewing machine for construction
- overlocker for finishing raw edges. This may be replaced with a stretch overlock stitch or a zigzag stitch on the sewing machine (overlock or zigzag stitch width 2–3 mm, stitch length 2.5 mm)
- stitch-in-the-ditch foot for the sewing machine (optional)
- invisible zipper foot for the sewing machine
- one-sided foot for the sewing machine
- loop turner

## PATTERN PIECES LIST

---

### 1. From main fabric:

- front bodice — cut 2
- front bodice lining — cut 2
- front skirt — cut 1
- back bodice — cut 2
- back skirt — cut 2
- sleeve — cut 2
- back skirt facing — cut 2
- sleeve hem facing — cut 2
- rouleau strap for button loops — cut 1
- back bodice neck binding — cut 2
- back bodice center edge binding — cut 2
- back bodice bottom edge binding — cut 2
- armscye binding — cut 2

### 2. From lace:

- front bodice lace — cut 2

### 3. From corset mesh:

- front bodice top lace — cut 2

**IMPORTANT!** Don't forget to transfer all pattern markings and notches onto the fabric.

### 4. From tulle:

- sleeve head — cut 2

### 5. From interfacing:

- back skirt facing — cut 2
- sleeve hem facing — cut 2

## SEAM ALLOWANCES

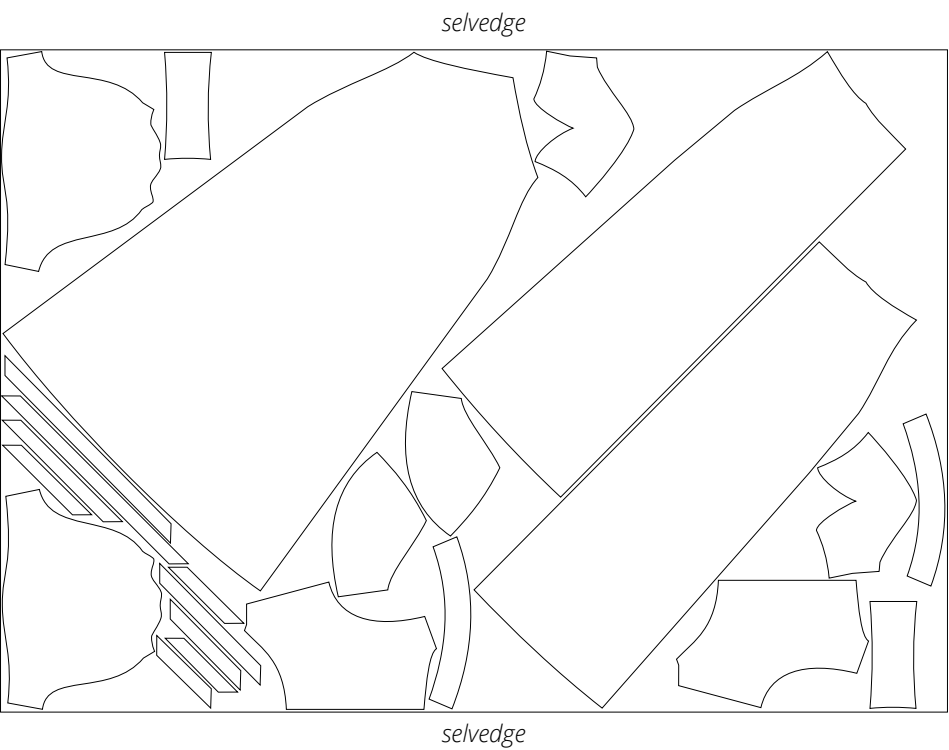
---

All pattern pieces include 1 cm (3/8") seam allowances.

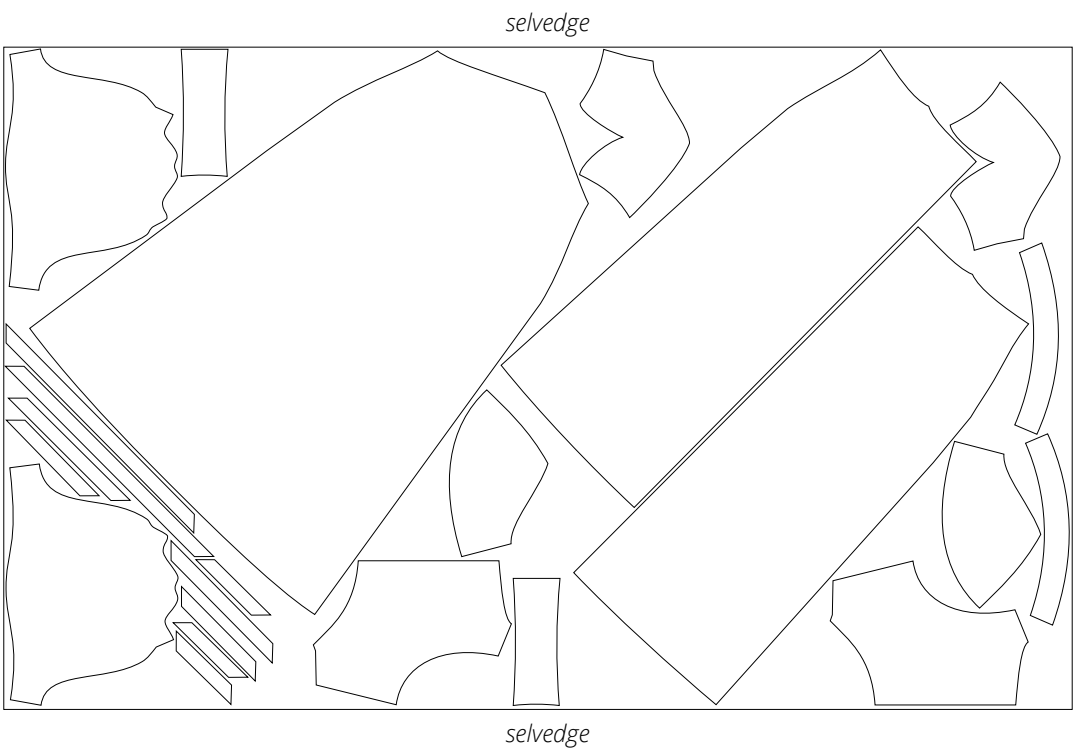
Take this into account when laying out pattern pieces on the fabric.

# CUTTING LAYOUT

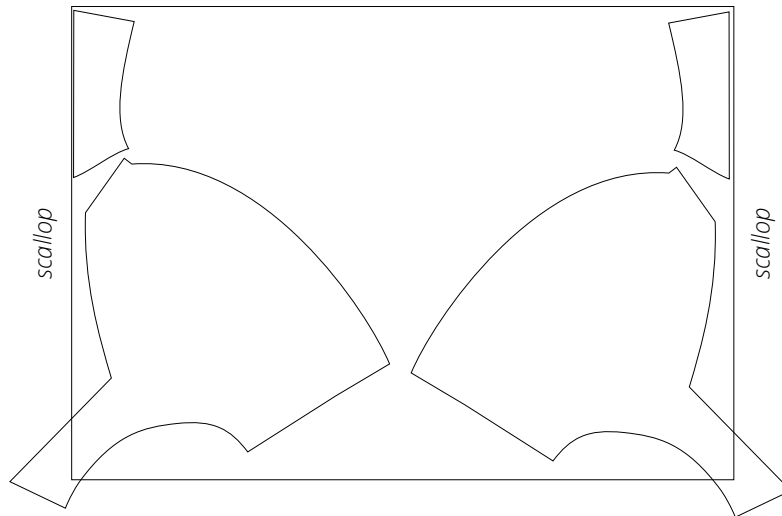
Main fabric, 140 cm (55") wide, with a non-directional print/no nap,  
cut on a single layer, for sizes 34-44 in all heights



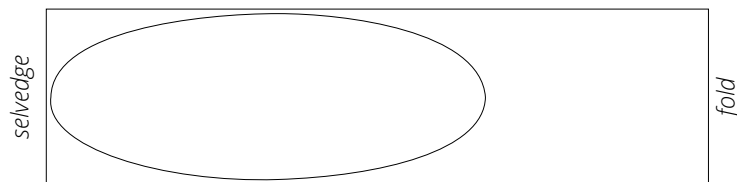
Main fabric, 140 cm (55") wide, with a non-directional print/no nap,  
cut on a single layer, for sizes 46-52 in all heights



Additional fabric (lace), 70 cm (27") wide, with a directional print, cut on a single layer, for all sizes in all heights



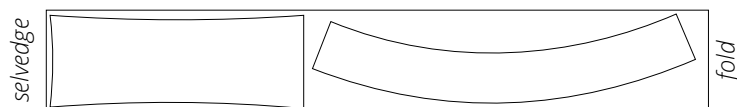
Additional fabric (tulle), 150 cm (59") wide, cut on fold, for all sizes in all heights



Additional fabric (corset mesh), 140 cm (55") wide, cut on fold, for all sizes in all heights

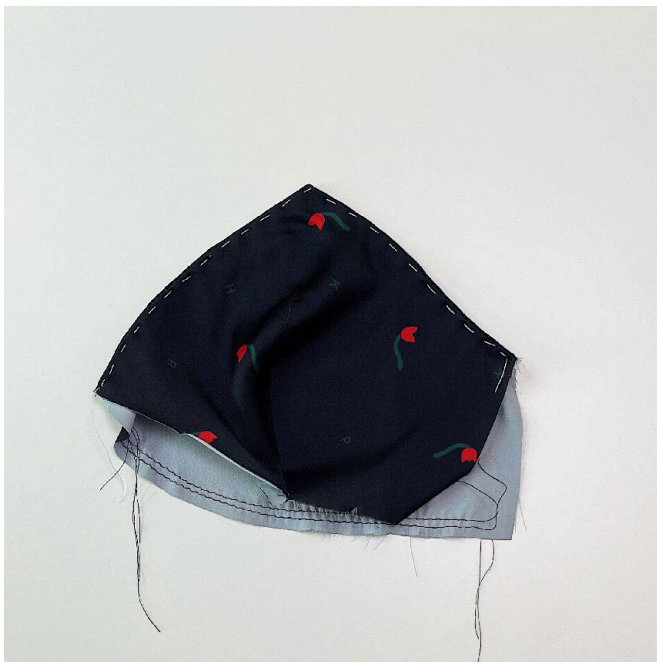


Interfacing, 140 cm (55") wide, cut on fold, for all sizes in all heights



**READY? LET'S GET SEWING!**





Turn the assembled front bodice piece to the right side. Push out the corner. Hand-baste along the finished edge, rolling the seam towards the lining by 1–2 mm. Press the seam.



Gather the bottom edge of the front bodice piece by pulling on both lower (bobbin) threads simultaneously.

When gathered, this edge should be as long as the corresponding edge on the front bodice lining piece. Distribute the gathering evenly.

Align and pin the bottom edges. Stitch on the sewing machine at 8 mm (just under 3/8") from the edge. Backstitch at the beginning and end of the seam.



The front bodice lace piece will be made of two parts to ensure the scalloped edge is placed along the entire front neckline.

Place the lace fabric to the bottom part of the pattern piece, aligning its scalloped edge with the neckline edge. Secure it in place with pins. Cut out the piece.