

FROM THE FOUNDER OF THE #VIKISEWS BRAND

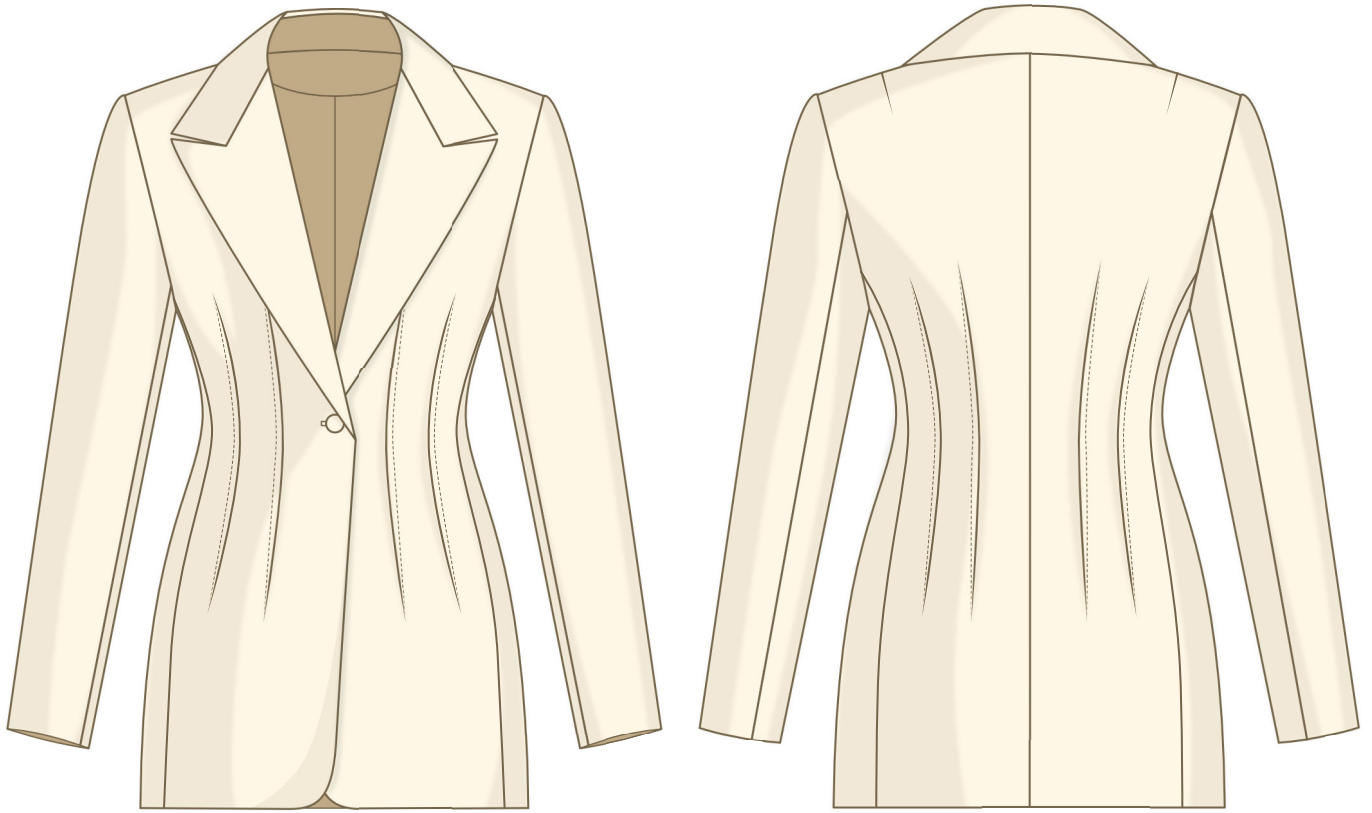


Back in 2016, when I was working on my first set of sewing instructions, I was trying to write them in such a way that even a complete beginner could easily understand and use them to create their very first garment. These instructions laid the foundation for the Vikisews brand, its vision and its mission. I wanted to create modern patterns with the most detailed and clear instructions.

Now, with each new collection we are constantly improving our instructions, amending them and adding more relevant details. By the time the final product reaches you, our drafters, correctors, and editors would have spent weeks perfecting every word and every photograph. If you compile a few of our instructions together, you will get a sewing manual that will assist you in sewing all kinds of garments at any difficulty level.

And I would be very happy if these instructions helped you to turn your hobby into a lifelong passion... Enjoy the process! Create your ultimate dream wardrobe! Wear your garments proudly for years to come!

If you have any questions, please contact us at info@vikisews.com - we are always there to help.



ETERI PATTERN DESCRIPTION

Eteri is a single-breasted, semi-fitted blazer with an accentuated waist. The silhouette of the blazer is achieved with side panels on the front and back, as well as with a center back seam and shoulder darts on the back. The bust dart on the front has been transferred to the shoulder seam. The waist dart ease has been split into two darts, which are worked on the right side of the garment, and pressed toward the center front and back. The waist darts feature decorative running stitches applied using topstitching thread. The extended shoulder line features shoulder pads. Eteri has long two-piece set-in sleeves. The collar is a classic blazer notched lapel style, with a separate collar stand. At the waist, the blazer fastens with a button and buttonhole. Eteri is fully lined and is mid-hip length.



IMPORTANT!

The contents of this pattern are copyright protected and belong exclusively to Vikisews. You may use Vikisews patterns for personal use. It is prohibited to share Vikisews patterns and instructions with third parties, as well as to publish patterns and instructions online for public access. **Non-compliance with the mentioned rules is a violation of the US copyright law and may result in civil liability and criminal prosecution.**

You may use Vikisews patterns for commercial use, to sew custom-made garments and/or create fashion collections, on the condition that the patterns are solely used in a manufacturing setting and are not further shared with individuals.

TOTAL EASE ALLOWANCE

	Bust ease	Waistline ease	Hipline ease	Upper arm ease
cm	11.5–12.3	11.2	13.6	8
inches	4 1/2–4 7/8	4 3/8	5 3/8	3 1/8

GARMENT LENGTH, SLEEVE LENGTH

Height, cm	Center back length, cm	Sleeve length, cm
1 (154–160)	67.7–69.5	59.4–61.2
2 (162–168)	70.7–72.5	61.3–63.1
3 (170–176)	73.7–75.5	63.2–65
4 (178–184)	76.7–78.5	65.1–66.9

Height, ft	Center back length, in	Sleeve length, in
1 (5'1"–5'3")	26 5/8–27 3/8	23 3/8–24 1/8
2 (5'4"–5'6")	27 7/8–28 5/8	24 1/8–24 7/8
3 (5'7"–5'9")	29–29 3/4	24 7/8–25 5/8
4 (5'10"–6'1")	30 1/4–30 7/8	25 5/8–26 3/8

SUGGESTED FABRIC

To sew this blazer, choose suiting fabrics with the following properties:

- medium to heavy weight, pliable, breathable, soft, non-stretch or with little stretch, opaque
- the fabric content can include natural (wool, silk, cotton, linen), artificial (viscose), blends (wool + silk, wool + polyester, cotton + viscose, etc.), and synthetic fibers (polyester, polyester + elastane)
- the following fabrics are recommended: wool suiting, gabardine, jacquard, medium weight denim, corduroy.

Attention! We do not recommend very stretchy knit materials (jersey fabric) and lightweight sheer fabrics (chiffon, organza, stretch lace).

For the lining, we recommend fabrics which include artificial fibers (viscose), blends (viscose + elastane, viscose + polyester), or synthetic fibers (polyester, polyester + elastane).

The blazer in the photo is made of silk suiting. The fabric is medium weight, non-stretch, and structured. The fiber content is 100% silk.

FABRIC AND NOTIONS REQUIREMENTS

1. Main fabric, 140 cm wide, with a directional print/nap, in meters:

Height, cm	Size					
	34-38	40-42	44	46	48	50-52
1 (154-160)	1.65	1.75	1.9	1.9	1.95	1.95
2 (162-168)	1.7	1.8	1.95	2.0	2.0	2.05
3 (170-176)	1.75	1.85	2.05	2.05	2.10	2.10
4 (178-184)	1.8	1.9	2.10	2.15	2.2	2.2

Main fabric, 55" wide, with a directional print/nap, in yards:

Height, ft	Size					
	34-38	40-42	44	46	48	50-52
1 (5'1"-5'3")	1 3/4	1 7/8	2 1/8	2 1/8	2 1/8	2 1/8
2 (5'4"-5'6")	1 7/8	2	2 1/8	2 1/8	2 1/8	2 1/4
3 (5'7"-5'9")	1 7/8	2	2 1/4	2 1/4	2 1/4	2 1/4
4 (5'10"-6'1")	2	2 1/8	2 1/4	2 3/8	2 3/8	2 3/8

2. Lining fabric, 140 cm wide, in meters:

Height, cm	Size				
	34	36-46	48	50	52
1 (154-160)	1.3	1.3	1.35	1.35	1.4
2 (162-168)	1.3	1.35	1.4	1.4	1.5
3 (170-176)	1.35	1.4	1.45	1.45	1.55
4 (178-184)	1.45	1.45	1.5	1.5	1.6

Lining fabric, 55" wide, in yards:

Height, ft	Size				
	34	36-46	48	50	52
1 (5'1"-5'3")	1 3/8	1 3/8	1 1/2	1 1/2	1 1/2
2 (5'4"-5'6")	1 3/8	1 1/2	1 1/2	1 1/2	1 5/8
3 (5'7"-5'9")	1 1/2	1 1/2	1 5/8	1 5/8	1 3/4
4 (5'10"-6'1")	1 5/8	1 5/8	1 5/8	1 5/8	1 3/4

3. Fusible interfacing, knit or woven,
140 cm wide, for all sizes, in meters:

Height, cm	Meters
1 (154-160)	1.6
2 (162-168)	1.65
3 (170-176)	1.7
4 (178-184)	1.75

Fusible interfacing, knit or woven,
55" wide, for all sizes, in yards:

Height, ft	Yards
1 (5'1"-5'3")	1 3/4
2 (5'4"-5'6")	1 3/4
3 (5'7"-5'9")	1 7/8
4 (5'10"-6'1")	1 7/8

IMPORTANT! When purchasing fabric, please account for shrinkage and buy 5% more than required.

- One button, 2-2.5 cm (3/4-1") in diameter
- One pair of medium-weight layered shoulder pads
- One pair of sleeve heads
- Matching thread — 1 spool for the sewing machine
- Matching topstitching thread (e.g., Madeira No. 35) — 1 spool

TOOLS AND EQUIPMENT

- sewing machine for construction
- buttonhole foot for the sewing machine.

PATTERN PIECES LIST

1. From main fabric:

- front – cut 2
- back – cut 2
- top sleeve – cut 2
- bottom sleeve – cut 2
- side front – cut 2
- side back – cut 2
- undercollar – cut 2
- upper collar – cut 1 on fold
- collar stand – cut 2 on fold
- front facing – cut 2
- back neck facing – cut 1 on fold

2. From lining:

- front lining – cut 2
- back lining – cut 2
- top sleeve lining – cut 2
- bottom sleeve lining – cut 2

3. From interfacing:

- front – cut 2
- back – cut 2
- side front – cut 2
- side back – cut 2
- upper collar – cut 1 on fold
- undercollar – cut 2
- collar stand – cut 2 on fold
- front facing – cut 2
- back neck facing – cut 1 on fold

Additionally interface as follows:

- the seam allowances along the cap on the top and bottom sleeve (the shape of the interfacing can be found on the pattern pieces)
- the hem allowances on the top and bottom sleeve (using a strip of interfacing, cut parallel to the grainline, 5 cm (2") wide, and equal in length to the specifications on the pattern pieces).

Using bias fusible tape, interface as follows:

- the neckline edge on the front and back pieces
- the armscye on the front and back pieces
- the front edge, as well as the lapel roll line on the front.

IMPORTANT! Don't forget to transfer all pattern markings and notches onto the fabric.

SEAM ALLOWANCES

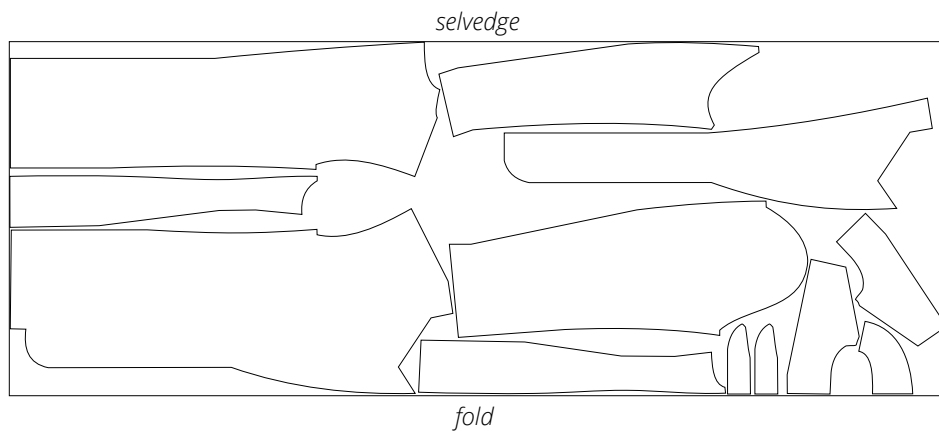
All pattern pieces include seam allowances as follows:

- garment hem allowance – 4 cm (1 5/8")
- sleeve hem allowance – 4 cm (1 5/8")
- all other edges – 1 cm (3/8")

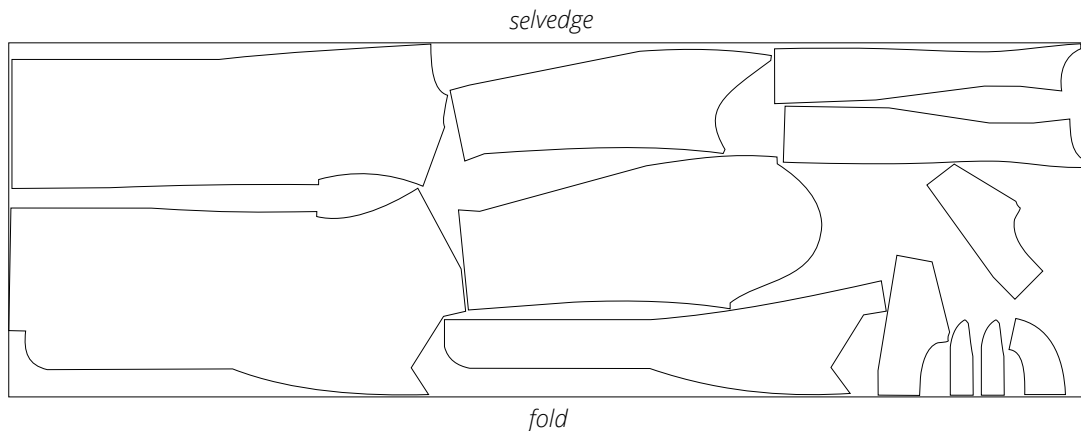
Take this into account when laying out pattern pieces on the fabric.

CUTTING LAYOUT

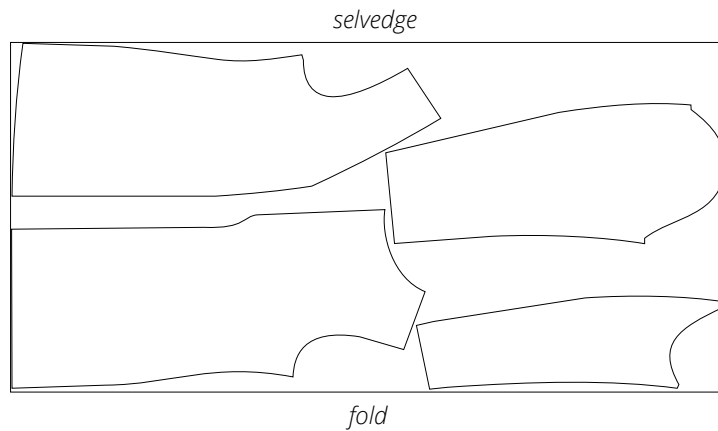
Main fabric, 140 cm (55") wide, with a directional print/nap,
cut on fold, for sizes 34–42 in all heights



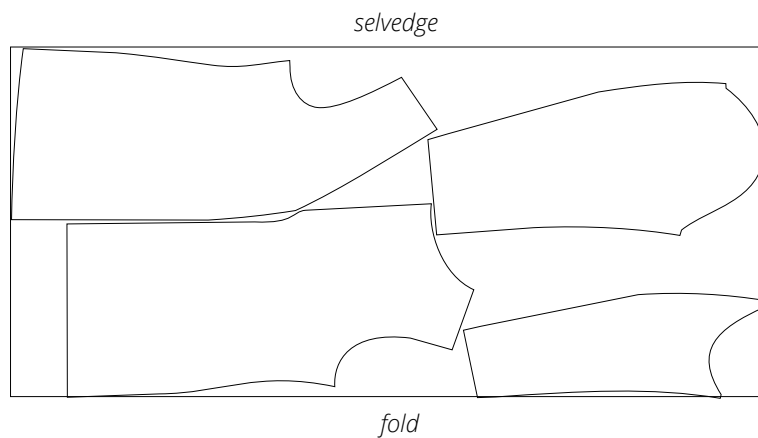
Main fabric, 140 cm (55") wide, with a directional print/nap,
cut on fold, for sizes 44–52 in all heights



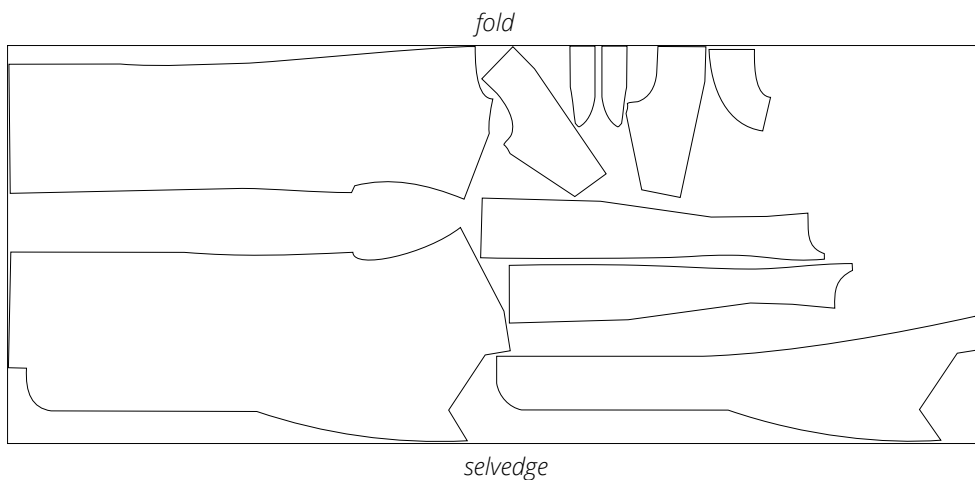
Lining fabric, 140 cm (55") wide, with a directional print, cut on fold, for sizes 34–50 in all heights



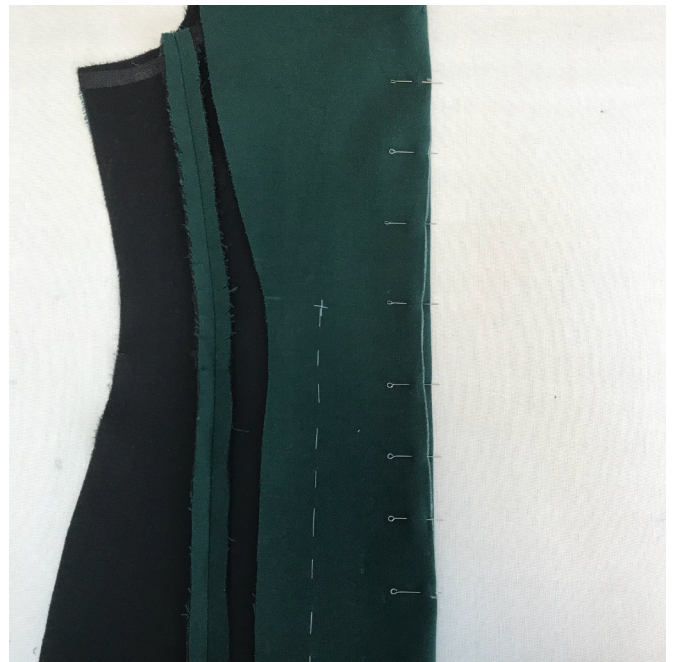
Lining fabric, 140 cm (55") wide, with a directional print, cut on fold, for size 52 in all heights



Interfacing, 140 cm (55") wide, cut on fold, for all sizes in all heights



READY? LET'S GET SEWING!



Mark the waist darts on the right side of the front and back pieces (transfer from pattern pieces). Pin and baste the waist darts.



Using the markings as a guide, machine the darts (use a 5 mm stitch length). Do not backstitch in the beginning and end. Leave long tails of thread.

Using a PRESSING CLOTH (!), press the darts flat, and then press them toward the center on the front and back pieces. Press and steam to shrink out the ease at the dart point.