

FROM THE FOUNDER OF THE #VIKISEWS BRAND

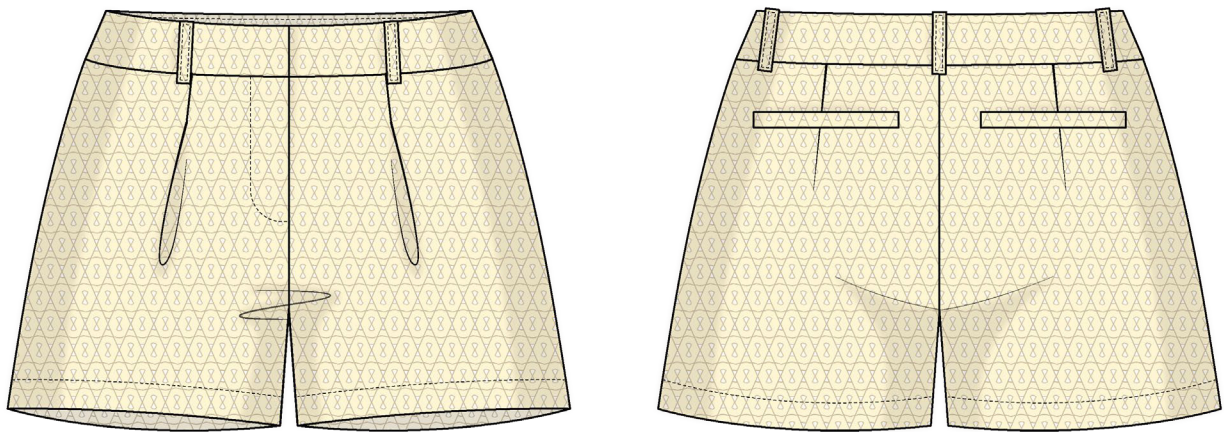


Back in 2016, when I was working on my first set of sewing instructions, I was trying to write them in such a way that even a complete beginner could easily understand and use them to create their very first garment. These instructions laid the foundation for the Vikisews brand, its vision and its mission. I wanted to create modern patterns with the utmost detailed and clear instructions.

Now, with each new collection we are constantly improving our instructions, amending them and adding more relevant details. By the time the final product reaches you, our drafters, correctors, and editors would have spent weeks perfecting every word and every photograph. If you compile a few of our instructions together, you will get a sewing manual that will assist you in sewing all kinds of garments at any difficulty level.

And I would be very happy if these instructions helped you to turn your hobby into a lifelong passion... Enjoy the process! Create your ultimate dream wardrobe! Wear your garments proudly for years to come!

If you have any questions, please contact us at info@vikisews.com — we are always there to help.



NALANI PATTERN DESCRIPTION

Nalani is a pair of semi-fitted, straight-leg shorts. The front features pleats, and the back is shaped with waist darts. The back also includes welt pockets with an internal button-and-loop closure. The applied waistband has belt loops and sits 5 cm (2") below the natural waistline. The shorts have a fly front zipper closure. The waistband fastens with a hook-and-bar closure. The shorts are above-knee length.



IMPORTANT!

The contents of this pattern are copyright protected and belong exclusively to Vikisews. You may use Vikisews patterns for personal use. It is prohibited to share Vikisews patterns and instructions with third parties, as well as to publish patterns and instructions online for public access. **Non-compliance with the mentioned rules is a violation of the US copyright law and may result in civil liability and criminal prosecution.**

You may use Vikisews patterns for commercial use, to sew custom-made garments and/or create fashion collections, on the condition that the patterns are solely used in a manufacturing setting and are not further shared with individuals.

TOTAL EASE ALLOWANCE

	Waistline ease (estimated)	Hipline ease
cm	15.1–18.1	12.8–13.9
inches	6–7 1/8	5–5 1/2

GARMENT LENGTH, HEM WIDTH

Height, cm	Side seam length including waistband, cm	Finished hem width, cm
1 (154–160)	28–34.3	32.7–44.8
2 (162–168)	29.7–36	32.7–44.8
3 (170–176)	31.4–37.7	32.7–44.8
4 (178–184)	33.1–39.4	32.7–44.8
Height, ft	Side seam length including waistband, in	Finished hem width, in
1 (5'1"–5'3")	11–13 1/2	12 7/8–17 5/8
2 (5'4"–5'6")	11 3/4–14 1/8	12 7/8–17 5/8
3 (5'7"–5'9")	12 3/8–14 7/8	12 7/8–17 5/8
4 (5'10"–6'1")	13–15 1/2	12 7/8–17 5/8

SUGGESTED FABRIC

To sew these shorts, choose medium-weight, soft, non-stretch or low-stretch, opaque suiting fabrics made of natural fibers, artificial fibers, blends, or synthetics.

Recommended fabrics: corduroy, denim, jacquard, suiting.

Attention! We do not recommend stretchy knit fabrics and lightweight sheer fabrics (chiffon, organza, stretch lace).

The shorts in the photos are made of jacquard. The fabric is medium weight, soft, and low-stretch. The fiber content is 8% silk + 44% polyamide + 48% polyester. The fabric weight is 178 g/m².

The fiber content of the lining is 100% viscose. The lining fabric weight is 100 g/m².

FABRIC AND NOTIONS REQUIREMENTS

1. Main fabric, 140 cm wide, with a directional print/nap, in meters:

Height, cm	Size				
	34	36–38	40–42	44–50	52
1 (154–160)	0.65	0.65	0.7	0.85	0.85
2 (162–168)	0.65	0.65	0.75	0.85	0.9
3 (170–176)	0.65	0.7	0.75	0.85	0.9
4 (178–184)	0.65	0.7	0.8	0.9	0.9

Main fabric, 55" wide, with a directional print/nap, in yards:

Height, ft	Size			
	34–38	40–42	44–50	52
1 (5'1"–5'3")	3/4	3/4	7/8	7/8
2 (5'4"–5'6")	3/4	7/8	7/8	1
3 (5'7"–5'9")	3/4	7/8	7/8	1
4 (5'10"–6'1")	3/4	7/8	1	1

IMPORTANT! When purchasing fabric, please account for shrinkage and buy 5% more than required.

2. Lining fabric, 140 cm (55") wide, with a directional print, for all sizes and heights – 0.2 m (1/4 yd).
3. Lightweight interfacing, knit or woven, 140 cm (55") wide, for all sizes and heights – 0.35 m (3/8 yd).
4. One trouser zipper, 15 cm (5 7/8") long, for all sizes and heights.
5. Two buttons, 0.7–1 cm (1/4–3/8") in diameter.
6. Two sets of four-piece hook-and-bar closures for trousers.
7. Matching thread – 5 spools (1 spool for the sewing machine + 4 spools for the overlocker).

TOOLS AND EQUIPMENT

- sewing machine for construction
- overlocker for finishing raw edges. It can be replaced with a stretch overlock stitch or a zigzag stitch on the sewing machine (overlock or zigzag stitch width 2–3 mm, stitch length 2.5 mm)
- one-sided foot for the sewing machine to attach the zipper
- loop turner

PATTERN PIECES LIST

1. From main fabric:

- front leg – cut 2
- back leg – cut 2
- fly shield – cut 1
- left front waistband – cut 2
- right front waistband – cut 2
- back waistband – cut 2
- belt loops – cut 1 (makes 5 pieces)
- welt – cut 2
- pocket lining – cut 2
- button loop – cut 1 (makes 2 pieces)

2. From lining fabric:

- pocket lining – cut 2

3. From interfacing:

- left front waistband – cut 2
- right front waistband – cut 2
- back waistband – cut 2
- welt – cut 2

Additionally, cut the following from interfacing:

- one piece to interface the fly shield (marked on the pattern)
- one piece to interface the fly extension on the right front leg piece (marked on the pattern)
- two strips to reinforce the pocket opening seam allowances on the back leg pieces

The interfacing pieces should be cut on the straight grain (parallel to the selvedge).

IMPORTANT! Don't forget to transfer all pattern markings and notches onto the fabric.

SEAM ALLOWANCES

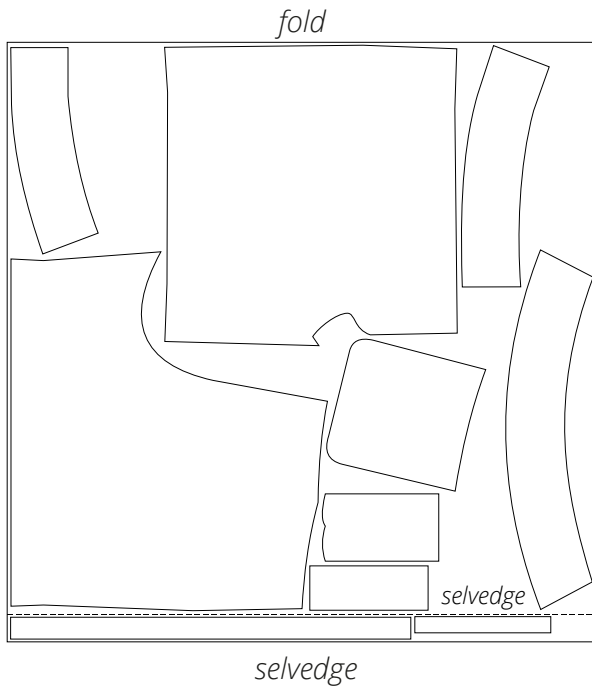
All pattern pieces include seam allowances as follows:

- garment hem allowance – 4 cm (1 5/8")
- pocket bag joining seam allowance – 1.5 cm (5/8")
- all other edges – 1 cm (3/8").

Take this into account when laying out pattern pieces on the fabric.

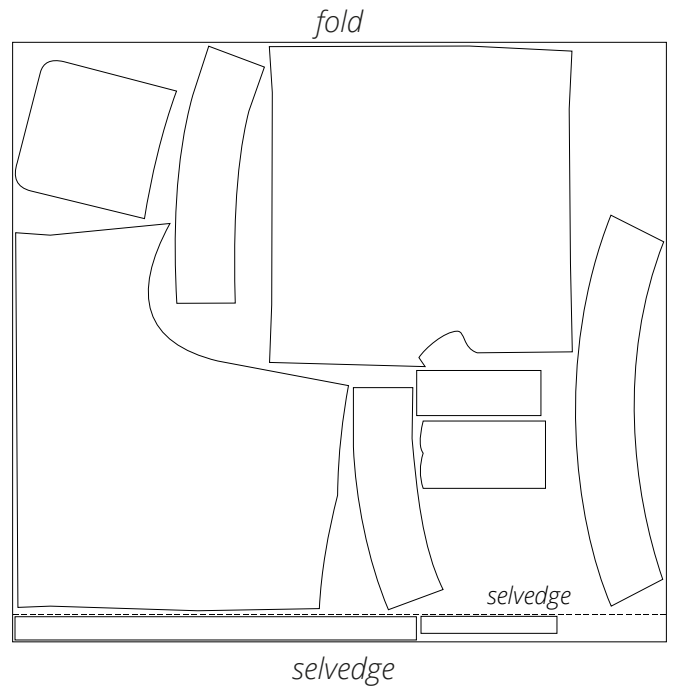
CUTTING LAYOUT

Main fabric, 140 cm (55") wide, with a directional print/nap, cut on a partial fold, for sizes 34–38 in all heights



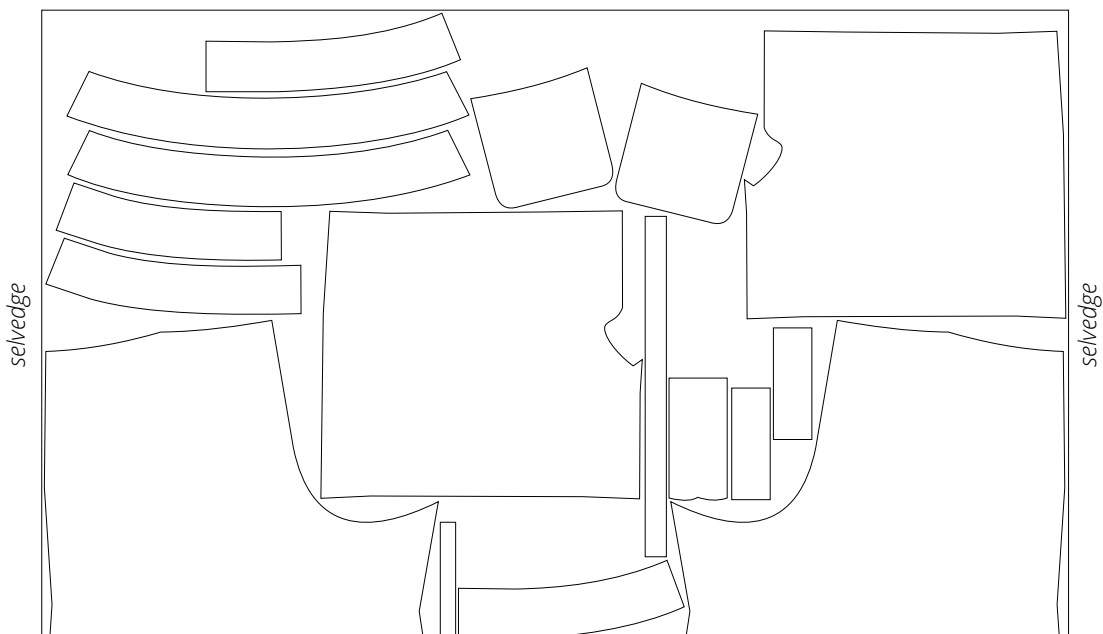
Attention! Cut one each of the fly shield, belt loops, and button loop pieces.

Main fabric, 140 cm (55") wide, with a directional print/nap, cut on a partial fold, for sizes 40–42 in all heights



Attention! Cut one each of the fly shield, belt loops, and button loop pieces.

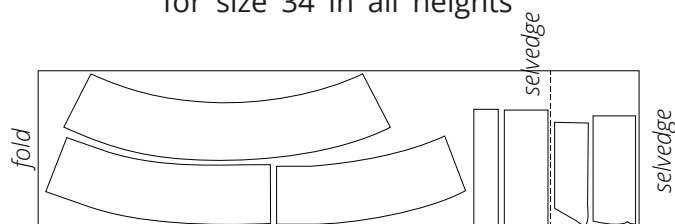
Main fabric, 140 cm (55") wide, with a directional print/nap, cut on a single layer, for sizes 44–52 in all heights



Lining fabric, 140 cm (55") wide, cut on a partial fold, for all sizes in all heights

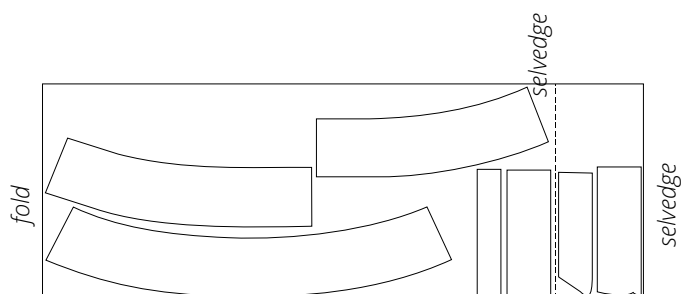


Interfacing, 140 cm (55") wide, cut on a partial fold and in one direction, for size 34 in all heights



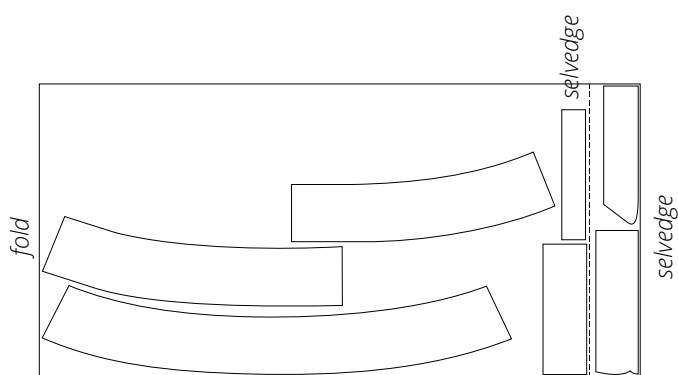
Attention! Cut one each of the fly shield and fly extension pieces.

Interfacing, 140 cm (55") wide, cut on a partial fold and in one direction, for sizes 36–42 in all heights



Attention! Cut one each of the fly shield and fly extension pieces.

Interfacing, 140 cm (55") wide, cut on a partial fold and in one direction, for sizes 44–52 in all heights



Attention! Cut one each of the fly shield and fly extension pieces.

READY? LET'S GET SEWING!



Stretch and press the crotch seam edges of the back leg pieces.

Stretch the crotch edge between the center edge corner and the inseam edge while pressing.



After stitching the darts and stretching the center back edge, the waistline and the marked pocket opening may become distorted.



Use the iron to correct the shape, using the pattern piece as a guide. To do this, close the dart on the back leg paper pattern piece.