

FROM THE FOUNDER OF THE #VIKISEWS BRAND

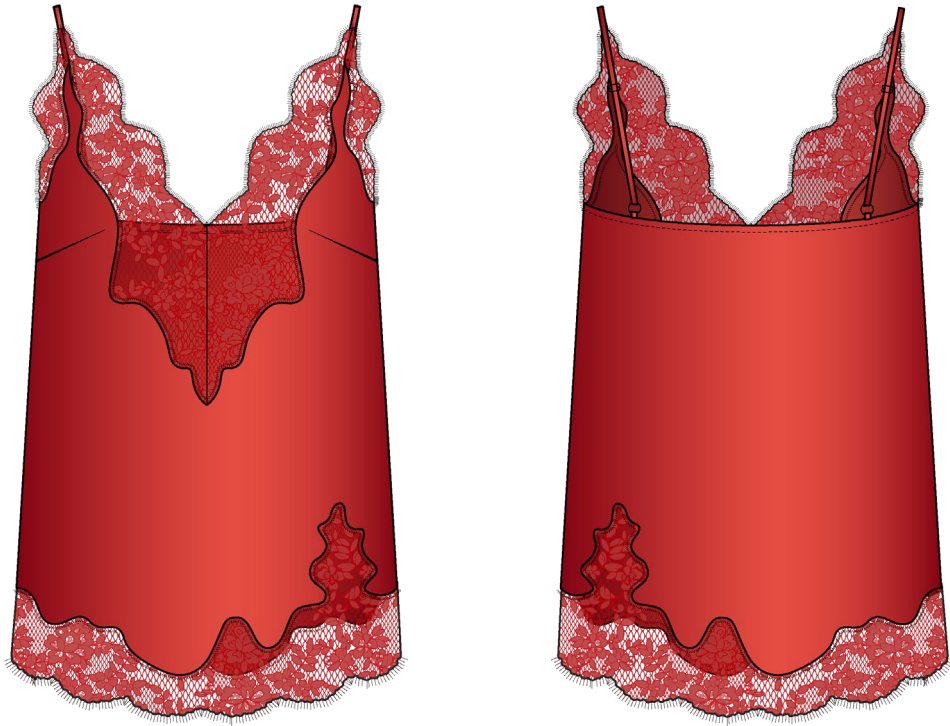


Back in 2016, when I was working on my first set of sewing instructions, I was trying to write them in such a way that even a complete beginner could easily understand and use them to create their very first garment. These instructions laid the foundation for the Vikisews brand, its vision and its mission. I wanted to create modern patterns with the utmost detailed and clear instructions.

Now, with each new collection we are constantly improving our instructions, amending them and adding more relevant details. By the time the final product reaches you, our drafters, correctors, and editors would have spent weeks perfecting every word and every photograph. If you compile a few of our instructions together, you will get a sewing manual that will assist you in sewing all kinds of garments at any difficulty level.

And I would be very happy if these instructions helped you to turn your hobby into a lifelong passion... Enjoy the process! Create your ultimate dream wardrobe! Wear your garments proudly for years to come!

If you have any questions, please contact us at info@vikisews.com — we are always there to help.



CARYS PATTERN DESCRIPTION

Carys is a semi-fitted, lingerie-inspired cami top with a straight silhouette and adjustable spaghetti straps. The bust darts have been transferred to the side seams. The top edge at the back is finished with bias binding. The front features shaped lace inserts along the V-neckline and armholes. The bottom edge is decorated with shaped lace trim. The garment is hip-length.



IMPORTANT!

The contents of this pattern are copyright protected and belong exclusively to Vikisews. You may use Vikisews patterns for personal use. It is prohibited to share Vikisews patterns and instructions with third parties, as well as to publish patterns and instructions online for public access. **Non-compliance with the mentioned rules is a violation of the US copyright law and may result in civil liability and criminal prosecution.**

You may use Vikisews patterns for commercial use, to sew custom-made garments and/or create fashion collections, on the condition that the patterns are solely used in a manufacturing setting and are not further shared with individuals.

TOTAL EASE ALLOWANCE

	Bust ease	Waistline ease	Hipline ease
cm	0.4–0.7	27.4–26.9	8.4
inches	1/8–1/4	10 3/4–10 5/8	3 1/4

GARMENT LENGTH

Height, cm	Back length from waist down (estimated), cm
1 (154–160)	18.8–20.6
2 (162–168)	20.8–22.6
3 (170–176)	22.8–24.6
4 (178–184)	24.8–26.6

Height, ft	Back length from waist down (estimated), in
1 (5'1"–5'3")	7 3/8–8 1/8
2 (5'4"–5'6")	8 1/4–8 7/8
3 (5'7"–5'9")	9–9 5/8
4 (5'10"–6'1")	9 3/4–10 1/2

SUGGESTED FABRIC

To sew this top, choose medium-weight, soft, non-stretch or low-stretch dress-weight fabrics made of natural, artificial, synthetic fibers, or blends.

The following fabrics are recommended: satin, natural silk, artificial silk, sateen.

As an additional fabric, we recommend using lace fabric or embroidered non-stretch mesh, either transparent or matching the main fabric.

Important! We do not recommend using stretchy fabrics!

The top in the photo is made of natural satin. The fabric is medium weight, soft, and low-stretch. The fiber content is 100% silk. The fabric weight is 120 g/m².

The additional fabric is lace. The fabric is medium weight, soft, and without stretch. The fiber content is 100% synthetic fibers. The fabric weight is 125 g/m².

FABRIC AND NOTIONS REQUIREMENTS

1. Main fabric, 140 cm wide, with a directional print/nap, 200–250 g/m², in meters:

Height, cm	Size									
	34	36	38	40	42	44	46	48	50	52
1 (154–160)	0.65	0.65	0.7	0.7	0.75	0.8	0.8	0.85	0.9	0.9
2 (162–168)	0.65	0.7	0.7	0.75	0.8	0.8	0.85	0.9	0.9	0.95
3 (170–176)	0.7	0.7	0.75	0.8	0.85	0.85	0.9	0.9	0.95	1
4 (178–184)	0.7	0.75	0.8	0.85	0.85	0.9	0.95	0.95	1	1.05

Main fabric, 55" wide, with a directional print/nap, 200–250 g/m², in yards:

Height, ft	Size									
	34	36	38	40	42	44	46	48	50	52
1 (5'1"–5'3")	3/4	3/4	3/4	3/4	7/8	7/8	7/8	7/8	1	1
2 (5'4"–5'6")	3/4	3/4	3/4	7/8	7/8	7/8	7/8	1	1	1
3 (5'7"–5'9")	3/4	3/4	7/8	7/8	7/8	7/8	1	1	1	1 1/8
4 (5'10"–6'1")	3/4	7/8	7/8	7/8	7/8	1	1	1	1 1/8	1 1/8

2. Lace fabric, 70 cm (27") wide, 100–150 g/m², with scallops on both edges, for all heights:

Size	34–36	38	40	42	44–46	48	50	52
meters	1.05	1.1	1.15	1.2	1.25	1.3	1.35	1.4
yards	1 1/8	1 1/4	1 1/4	1 1/4	1 3/8	1 3/8	1 1/2	1 1/2

IMPORTANT! The lace material requirement depends on the pattern repeat, type of embroidery (single-sided / double-sided), and the desired result. The table shows the requirement for the lace fabric used in this garment!

IMPORTANT! When purchasing fabric and lace, please account for shrinkage and buy 5% more than required.

- Two strap rings, 6 mm (1/4") in diameter
- Two strap slide adjusters, 6 mm (1/4") wide
- Matching thread — 1 spool for the sewing machine

TOOLS AND EQUIPMENT

- sewing machine for construction
- stitch-in-the-ditch foot for the sewing machine (optional)
- loop turner

PATTERN PIECES LIST

From main fabric:

- front — cut 1
- back — cut 1
- strap + ring tab — cut 2
- back binding — cut 1

IMPORTANT! Don't forget to transfer all pattern markings and notches onto the fabric.

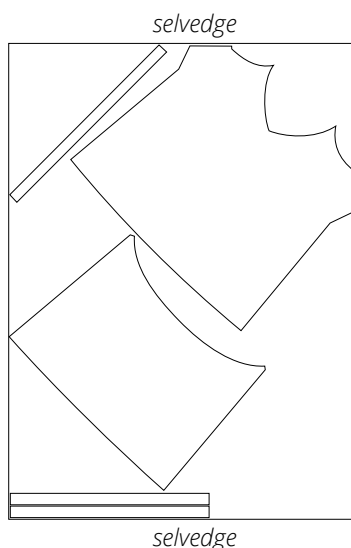
SEAM ALLOWANCES

There are no seam allowances along the neckline and armhole edges on the front piece, as well as along the bottom edge both on the front and back pieces.

All other edges have 1 cm (3/8") seam allowances. Take this into account when laying out pattern pieces on the fabric.

CUTTING LAYOUT

Main fabric, 140 cm (55") wide, with a directional print/nap, cut on a single layer, for all sizes in all heights



READY? LET'S GET SEWING!



Mirror the marked lines onto the left-hand side of the front piece.



Place the lace fabric wrong side down to the right side of the front piece. Plan the placement of the scallops along the neckline edge on one half of the front piece. Pin the lace in place.



Cut the lace carefully, following the lace pattern and the marked line on the front piece.

When cutting along the center front line, add a 1 cm (3/8") seam allowance to finish the center seam later on.