

FROM THE FOUNDER OF THE #VIKISEWS BRAND

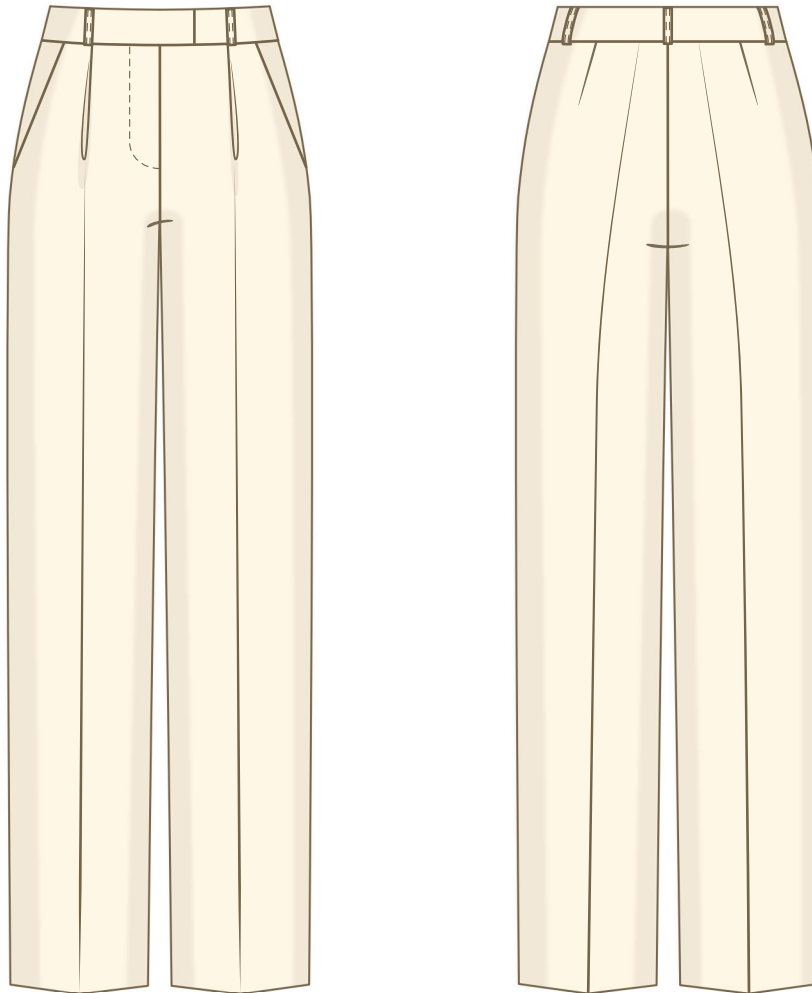


Back in 2016, when I was working on my first set of sewing instructions, I was trying to write them in such a way that even a complete beginner could easily understand and use them to create their very first garment. These instructions laid the foundation for the Vikisews brand, its vision and its mission. I wanted to create modern patterns with the utmost detailed and clear instructions.

Now, with each new collection we are constantly improving our instructions, amending them and adding more relevant details. By the time the final product reaches you, our drafters, correctors, and editors would have spent weeks perfecting every word and every photograph. If you compile a few of our instructions together, you will get a sewing manual that will assist you in sewing all kinds of garments at any difficulty level.

And I would be very happy if these instructions helped you to turn your hobby into a lifelong passion... Enjoy the process! Create your ultimate dream wardrobe! Wear your garments proudly for years to come!

If you have any questions, please contact us at info@vikisews.com — we are always there to help.



KAREN PATTERN DESCRIPTION

Karen is a pair of semi-fitted straight-cut trousers, sitting 6 cm (2 3/8") below the natural waistline. The trousers have pressed creases and inspired by menswear. The back features waist darts. The front features functional slash pockets and waist pleats directed towards the side seams. The semi-fitted waistband has belt loops and closes with two hooks and bars. The trousers have a fly front zipper closure and are floor-length, with a slight break at the bottom.



IMPORTANT!

The contents of this pattern are copyright protected and belong exclusively to Vikisews. You may use Vikisews patterns for personal use. It is prohibited to share Vikisews patterns and instructions with third parties, as well as to publish patterns and instructions online for public access. **Non-compliance with the mentioned rules is a violation of the US copyright law and may result in civil liability and criminal prosecution.**

You may use Vikisews patterns for commercial use, to sew custom-made garments and/or create fashion collections, on the condition that the patterns are solely used in a manufacturing setting and are not further shared with individuals.

TOTAL EASE ALLOWANCE

	Waistline ease (depending on the size)	Hipline ease
cm	15.5	11.5
inches	6 1/8	4 1/2

GARMENT LENGTH

Height, cm	Side seam length including waistband, cm	Height, ft	Side seam length including waistband, in
1 (154–160)	107	1 (5'1"–5'3")	42 1/8
2 (162–168)	110	2 (5'4"–5'6")	43 1/4
3 (170–176)	113	3 (5'7"–5'9")	44 1/2
4 (178–184)	116	4 (5'10"–6'1")	45 5/8

FINISHED HEM WIDTH

Size	34	36	38	40	42	44	46
Width, cm	22.4	22.7	22.9	23.2	23.4	23.7	23.9
Width, in	8 7/8	8 7/8	9	9 1/8	9 1/4	9 3/8	9 3/8

SUGGESTED FABRIC

To sew these trousers, choose suiting fabrics with the following properties: medium weight, soft and crisp, structured, non-stretch.

The fiber content can include natural fibers (wool, cotton, silk), blends (wool + polyester, cotton + polyester, etc.), or synthetics (polyester).

The following fabrics are recommended: wool suiting, cotton, crepe, gabardine.

The trousers in the photo are made of silk suiting. The fabric is medium weight, non-stretch, and structured. The fiber content is 100% silk.

FABRIC AND NOTIONS REQUIREMENTS

1. Main fabric, 140 cm wide, with a directional print/nap, in meters:

Height, cm	Size		
	34-38	40	42-46
1 (154-160)	1.4	1.8	1.9
2 (162-168)	1.4	1.85	2
3 (170-176)	1.45	1.85	2.05
4 (178-184)	1.5	1.85	2.1

Main fabric, 55" wide, with a directional print/nap, in yards:

Height, ft	Size		
	34-38	40	42-46
1 (5'1"-5'3")	1 1/2	2	2 1/8
2 (5'4"-5'6")	1 1/2	2	2 1/8
3 (5'7"-5'9")	1 5/8	2	2 1/4
4 (5'10"-6'1")	1 5/8	2	2 1/4

Main fabric, 140 cm wide, with a non-directional print/no nap, in meters:

Height, cm	Size			
	34	36-40	42	44-46
1 (154-160)	1.35	1.4	1.55	1.6
2 (162-168)	1.4	1.4	1.6	1.65
3 (170-176)	1.45	1.45	1.65	1.65
4 (178-184)	1.5	1.5	1.65	1.7

Main fabric, 55" wide, with a non-directional print/no nap, in yards:

Height, ft	Size		
	34-40	42	44-46
1 (5'1"-5'3")	1 1/2	1 3/4	1 3/4
2 (5'4"-5'6")	1 1/2	1 3/4	1 3/4
3 (5'7"-5'9")	1 5/8	1 3/4	1 3/4
4 (5'10"-6'1")	1 5/8	1 3/4	1 7/8

IMPORTANT! When purchasing fabric, please account for shrinkage and buy 5% more than required.

2. Lining fabric, 140 cm (55") wide, with a directional print, for all sizes in all heights — 0.3 m (3/8 yd)
3. Woven interfacing, 140 cm (55") wide, for all heights:

Size	34	36–40	42–44	46
meters	0.4	0.45	0.5	0.55
yards	3/8	1/2	1/2	5/8

4. One trouser zipper, 15 cm (5 7/8") long, for all sizes in all heights
5. Two trouser hook and bar closures
6. Matching thread — 5 spools (1 spool for the sewing machine + 4 spools for the overlocker)

TOOLS AND EQUIPMENT

- sewing machine for construction
- overlocker for finishing raw edges. This may be replaced with a stretch overlock stitch or a zigzag stitch on the sewing machine (overlock or zigzag stitch width 2–3 mm, stitch length 2.5 mm)
- stitch-in-the-ditch foot for the sewing machine (optional)

PATTERN PIECES LIST

1. From main fabric:

- front leg — cut 2
- back leg — cut 2
- back waistband — cut 1
- right front waistband — cut 1
- left front waistband — cut 1
- fly shield — cut 1 on fold
- slash pocket — cut 2
- belt loops — cut 1

2. From lining fabric:

- pocket lining — cut 2

***IMPORTANT!** Don't forget to transfer all pattern markings and notches onto the fabric.*

3. From interfacing:

- back waistband — cut 1
- right front waistband — cut 1
- left front waistband — cut 1
- fly extension — cut 1

Additionally, interface the following:

- zipper section on the left front leg piece (use a 1.5 cm [5/8"] wide strip of interfacing cut on the straight grain)
- pocket opening edges on the front leg pieces (apply stitched straight-grain fusible stay tape at 8 mm [just under 3/8"] from the edge)

SEAM ALLOWANCES

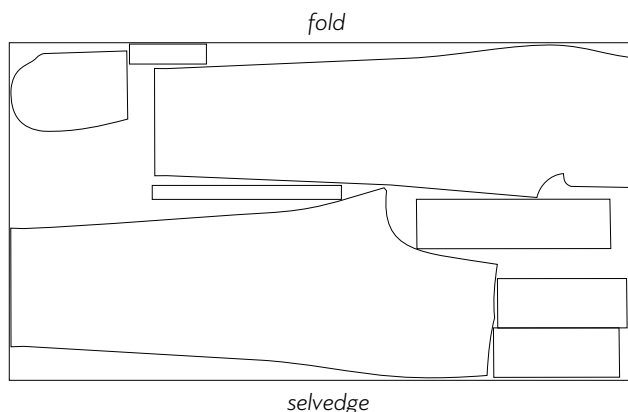
All pattern pieces include seam allowances as follows:

- garment hem allowance — 4 cm (5/8")
- all other edges — 1 cm (3/8")

Take this into account when laying out pattern pieces on the fabric.

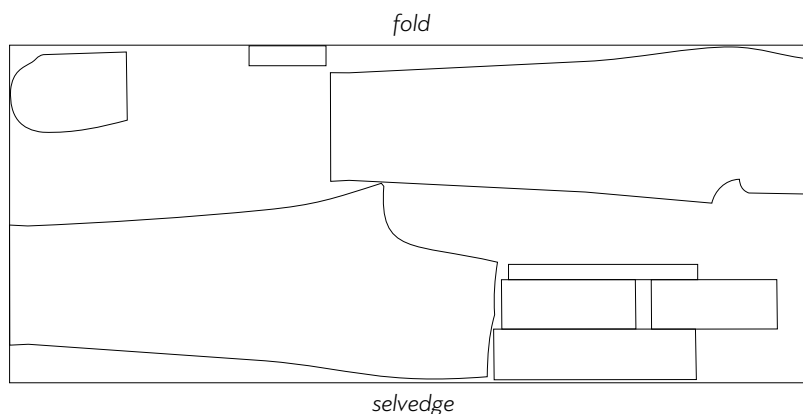
CUTTING LAYOUT

Main fabric, 140 cm (55") wide, with a directional print/nap, cut on fold, for sizes 34–38 in all heights



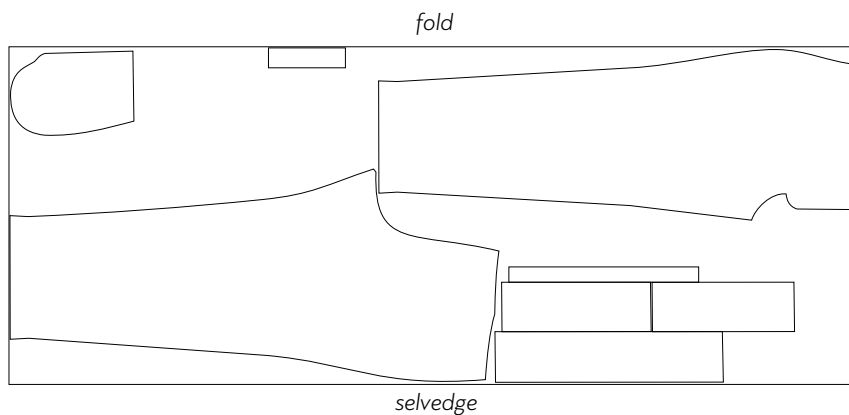
Attention! The waistband and belt loops pieces are cut once.

Main fabric, 140 cm (55") wide, with a directional print/nap, cut on fold, for size 40 in all heights



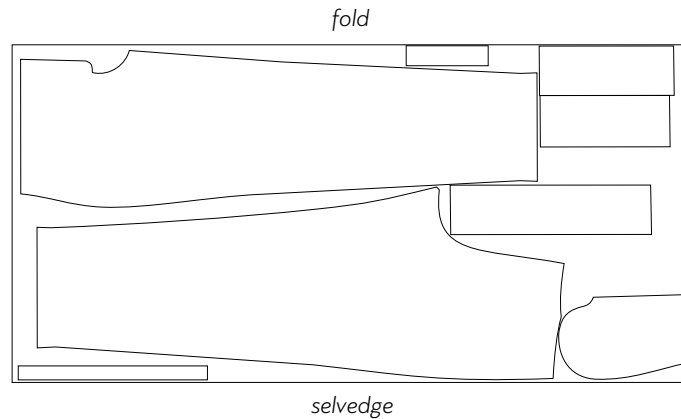
Attention! The waistband and belt loops pieces are cut once.

Main fabric, 140 cm (55") wide, with a directional print/nap, cut on fold, for sizes 42–46 in all heights



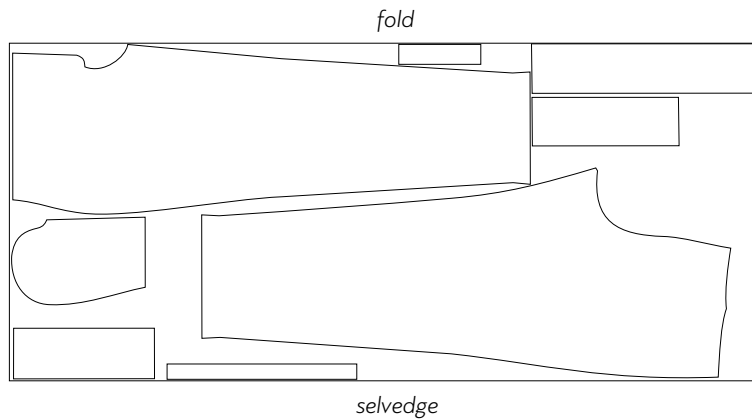
Attention! The waistband and belt loops pieces are cut once.

Main fabric, 140 cm (55") wide, with a non-directional print/no nap, cut on fold, for sizes 34–40 in all heights



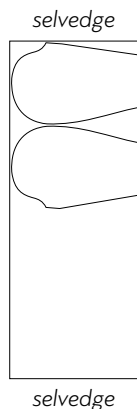
Attention! The waistband and belt loops pieces are cut once.

Main fabric, 140 cm (55") wide, with a non-directional print/no nap, cut on fold, for sizes 42–46 in all heights

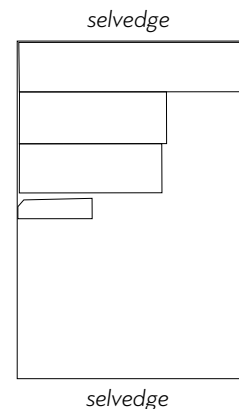


Attention! The waistband and belt loops pieces are cut once.

Lining fabric, 140 cm (55") wide, with a directional print, cut on a single layer, for all sizes in all heights



Interfacing, 140 cm (55") wide, cut on a single layer, for all sizes in all heights



READY? LET'S GET SEWING!



Place the pocket lining piece right sides together with the front leg piece. Align the pocket opening edges, match the notches, pin, and hand-baste.

Machine-stitch, backstitching at the beginning and end of the seam.



Press the seam flat.



Trim the seam allowances down to 5 mm (just under 1/4"). Press the seam allowances towards the pocket lining piece.



Understitch the seam allowances to the pocket lining piece at 1 mm from the seam. Backstitch at the beginning and end of the seam.