

FROM THE FOUNDER OF THE #VIKISEWS BRAND

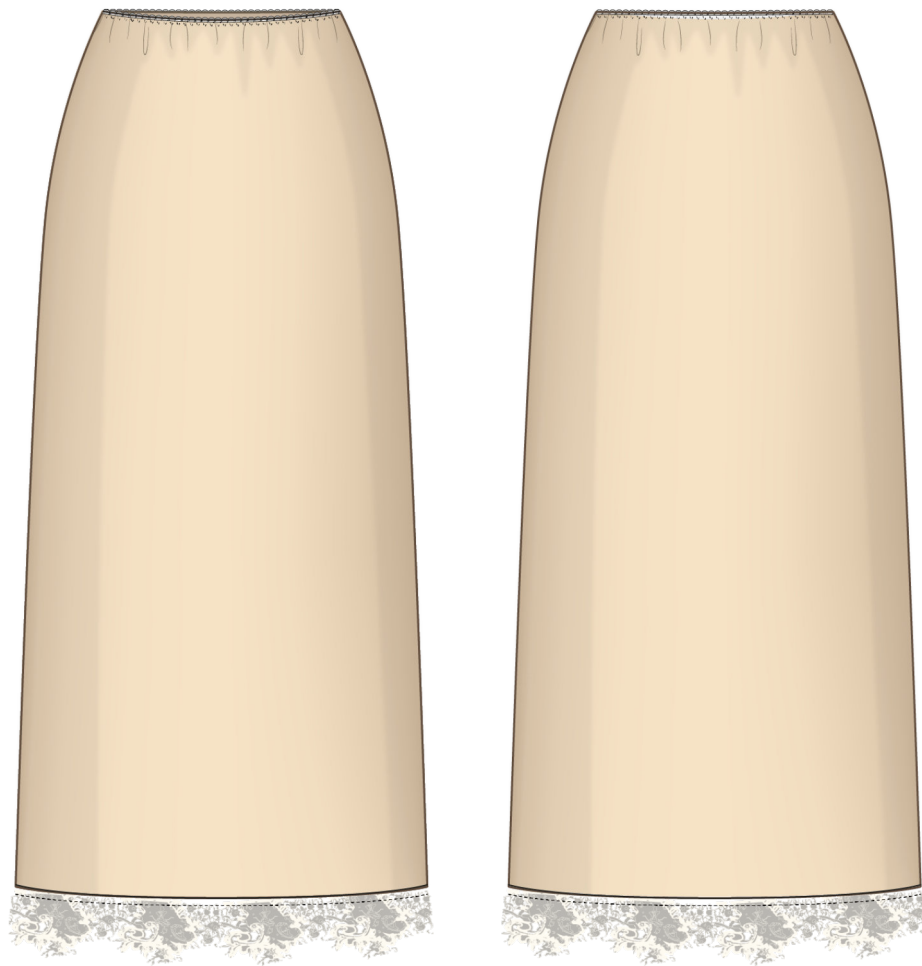


Back in 2016, when I was working on my first set of sewing instructions, I was trying to write them in such a way that even a complete beginner could easily understand and use them to create their very first garment. These instructions laid the foundation for the Vikisews brand, its vision and its mission. I wanted to create modern patterns with the utmost detailed and clear instructions.

Now, with each new collection we are constantly improving our instructions, amending them and adding more relevant details. By the time the final product reaches you, our drafters, correctors, and editors would have spent weeks perfecting every word and every photograph. If you compile a few of our instructions together, you will get a sewing manual that will assist you in sewing all kinds of garments at any difficulty level.

And I would be very happy if these instructions helped you to turn your hobby into a lifelong passion... Enjoy the process! Create your ultimate dream wardrobe! Wear your garments proudly for years to come!

If you have any questions, please contact us at info@vikisews.com — we are always there to help.



SANDAHL PATTERN DESCRIPTION

Sandahl is a semi-fitted skirt with a straight silhouette. The top edge is finished with picot lingerie elastic. The bottom edge is finished with lace. Sandahl is below-knee length.



IMPORTANT!

The contents of this pattern are copyright protected and belong exclusively to Vikisews. You may use Vikisews patterns for personal use. It is prohibited to share Vikisews patterns and instructions with third parties, as well as to publish patterns and instructions online for public access. **Non-compliance with the mentioned rules is a violation of the US copyright law and may result in civil liability and criminal prosecution.**

You may use Vikisews patterns for commercial use, to sew custom-made garments and/or create fashion collections, on the condition that the patterns are solely used in a manufacturing setting and are not further shared with individuals.

TOTAL EASE ALLOWANCE

	Waistline ease	Hipline ease
cm	36.4–39.9	16.9–17.1
inches	14 $\frac{3}{8}$ –15 $\frac{3}{4}$	6 $\frac{5}{8}$ –6 $\frac{3}{4}$

GARMENT LENGTH

Height, cm	Skirt length including lace, cm	Height, ft	Skirt length including lace, in
1 (154–160)	76.9	1 (5'1"–5'3")	30 $\frac{1}{4}$
2 (162–168)	79.9	2 (5'4"–5'6")	31 $\frac{1}{2}$
3 (170–176)	82.9	3 (5'7"–5'9")	32 $\frac{5}{8}$
4 (178–184)	85.9	4 (5'10"–6'1")	33 $\frac{7}{8}$

SUGGESTED FABRIC

To sew this skirt, choose soft, non-stretch, opaque or semi-sheer dress-weight fabrics made of natural, artificial, blended, or synthetic fibers.

The following fabrics are recommended: batiste, gauze, organza, natural or artificial silk, chiffon, challis.

As an additional fabric, use narrow lace, lace fabrics, embroidered mesh, and guipure lace.

Attention! We do not recommend stretchy knit fabrics.

The skirt in the photo is made of silk chiffon. The fabric is medium weight and soft. The fiber content is a blend of 95% silk and 5% elastane. The fabric weight is 75 g/m².

The additional fabric is narrow, non-stretch lace. The fiber content is 100% polyester. The fabric weight is 70 g/m².

FABRIC AND NOTIONS REQUIREMENTS

1. Main fabric, 140 cm wide, with a directional print/nap, in meters:

Height, cm	Size		
	34-44	46	48-52
1 (154-160)	0.75	1.35	1.5
2 (162-168)	0.8	1.4	1.55
3 (170-176)	0.8	1.45	1.6
4 (178-184)	0.85	1.5	1.7

Main fabric, 55" wide, with a directional print/nap, in yards:

Height, ft	Size		
	34-44	46	48-52
1 (5'1"-5'3")	$\frac{7}{8}$	1 $\frac{1}{2}$	1 $\frac{5}{8}$
2 (5'4"-5'6")	$\frac{7}{8}$	1 $\frac{1}{2}$	1 $\frac{3}{4}$
3 (5'7"-5'9")	$\frac{7}{8}$	1 $\frac{5}{8}$	1 $\frac{3}{4}$
4 (5'10"-6'1")	$\frac{7}{8}$	1 $\frac{5}{8}$	1 $\frac{7}{8}$

2.2. Additional fabric (lace), 16 cm (6 $\frac{1}{4}$ ") wide, cut in different directions, without accounting for pattern repeat, for all heights:

Size	34	36-42	44-50	52
meters	0.6	0.7	0.8	0.9
yards	$\frac{5}{8}$	$\frac{3}{4}$	$\frac{7}{8}$	1

IMPORTANT! When purchasing fabric, please account for shrinkage and buy 5% more than required.

3. Picot lingerie elastic, 1 cm (3/8") wide — 0.5-0.9 m ($\frac{1}{2}$ —1) (the exact length is specified in the pattern).

4. Matching thread — 1 spool

TOOLS AND EQUIPMENT

- sewing machine with a zigzag stitch option for construction
- fine pins for delicate fabrics

PATTERN PIECES LIST

1. From main fabric:

- front — cut 1 on fold
- back — cut 1 on fold

2. From additional fabric (lace):

- front lace — cut 1 on fold
- back lace — cut 1 on fold

***IMPORTANT!** Don't forget to transfer all pattern markings and notches onto the fabric.*

SEAM ALLOWANCES

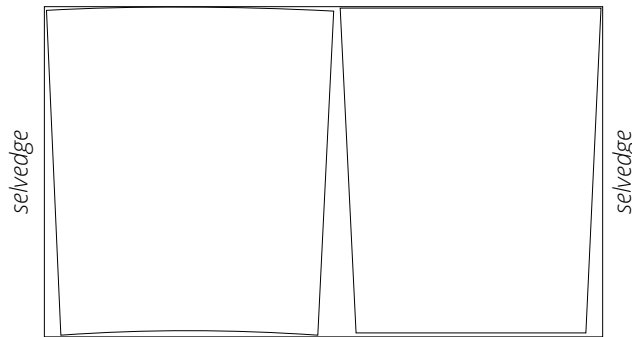
All pattern pieces include seam allowances as follows:

- garment hem allowance — 1.5 cm (5/8")
- all other edges — 1 cm (3/8")

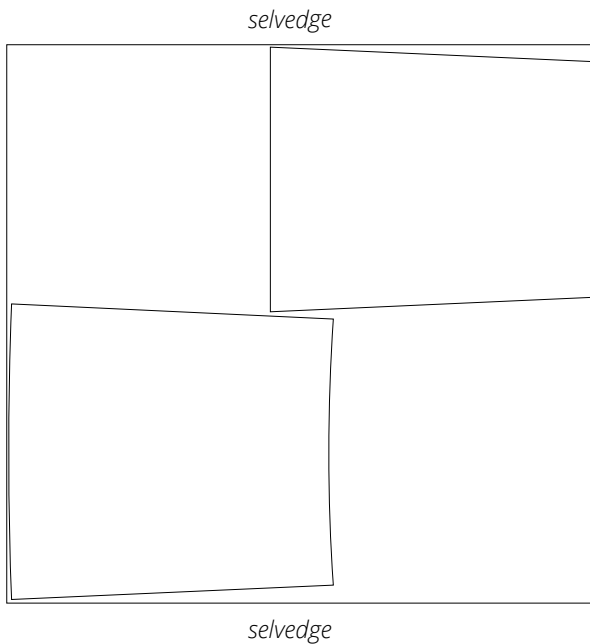
Take this into account when laying out the pattern pieces on the fabric.

CUTTING LAYOUT

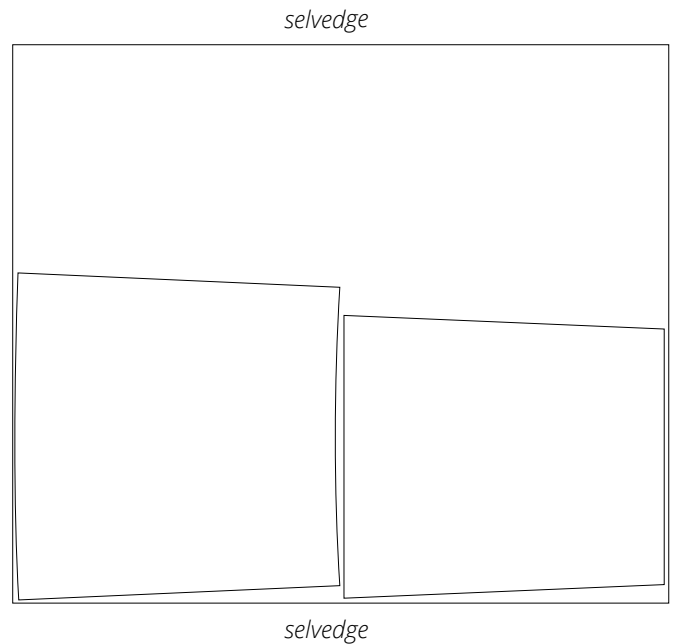
Main fabric, 140 cm (55") wide, with a directional print/nap, cut on a single layer, for sizes 34–44 in all heights



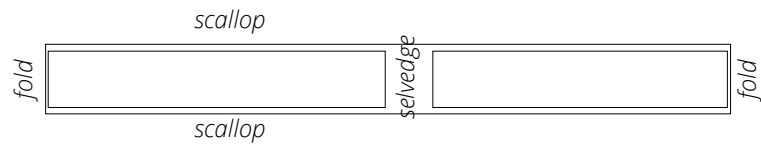
Main fabric, 140 cm (55") wide, with a directional print/nap, cut on a single layer, for size 46 in all heights



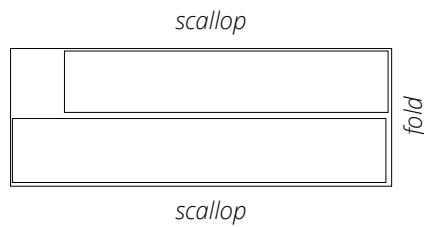
Main fabric, 140 cm (55") wide, with a directional print/nap, cut on a single layer, for sizes 48–52 in all heights



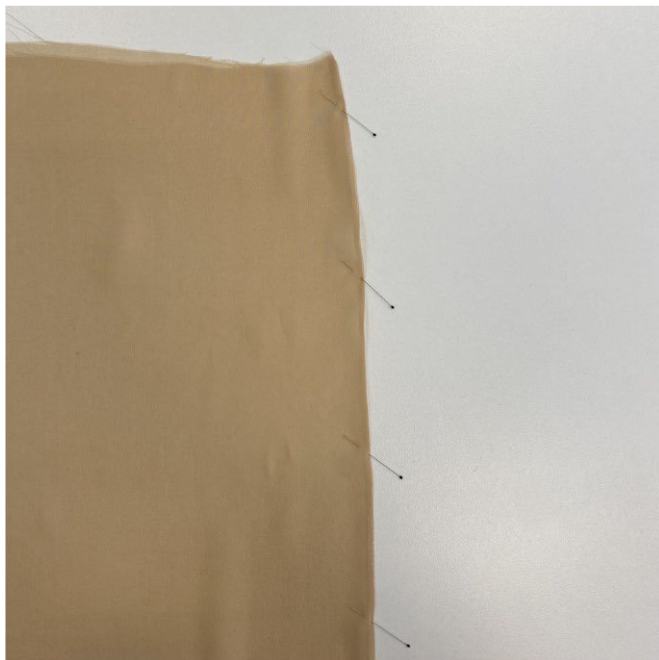
Additional fabric (lace), 8 cm (3 ⅛") wide, cut with two folds,
for all sizes in all heights



Additional fabric (lace), 16 cm (6 ¼") wide,
cut on fold, for all sizes in all heights



READY? LET'S GET SEWING!



Pin along the side seam.



Machine-stitch at 5 mm (just under 1/4") from the seam. Backstitch at the beginning and end of the seam.



Press the seam allowances towards the back skirt.